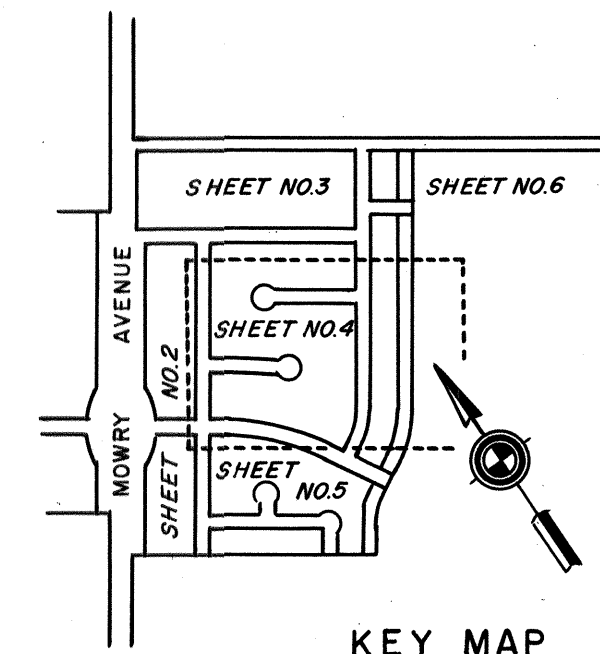


LEGEND:

- Concrete monuments with cast iron frame and cover to be installed are shown thus
- Public utility easements are designated thus
- Anchor easements are designated thus
- Building set-back lines, to be as required by the Zoning Ordinance of the City of Fremont, are designated thus

BASIS OF BEARINGS:

The bearing of MOWRY AVENUE was taken as N. 33° 28' 00" E. as a basis of bearings for this tract.



TRACT 2101
FREMONT VILLAGE
UNIT NO. 3
IN THE CITY OF FREMONT
IN THE COUNTY OF ALAMEDA
CALIFORNIA

NOVEMBER, 1959 SCALE: 1 INCH = 50 FEET

John A. Mancini,
Registered Civil Engineer No. 1592

AR41822

Sheet No. 4 of 6 Sheets