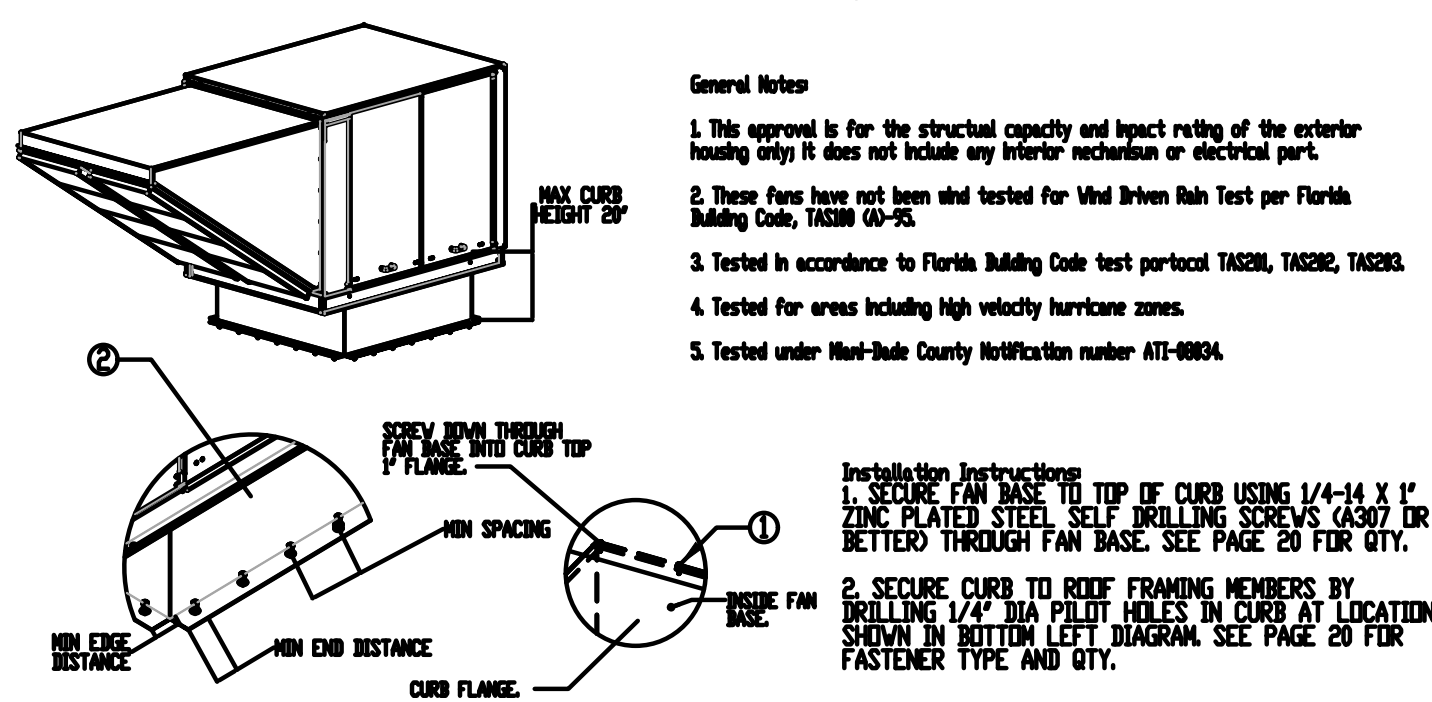


Miami-Dade NDA2 Supply Fans



General Notes

1. This approval is for the structural capacity and impact rating of the exterior housing only. It does not include any interior mechanism or electrical part.
 2. These fans have not been wind tested for Wind Driven Rain Test per Florida Building Code, TAS209 (00-25).
 3. Tested in accordance to Florida Building Code test protocol TAS209, TAS292, TAS293.
 4. Tested for areas including high velocity hurricane zones.
 5. Tested under Miami-Dade County Notification number AT1-09034.

Installation Instructions

1. SECURE FAN BASE TO TOP OF CURB USING 1/4"-14 X 1" ZINC PLATED STEEL SELF DRILLING SCREWS (A307) OR BETTER THROUGH FAN BASE. SEE PAGE 20 FOR QTY.

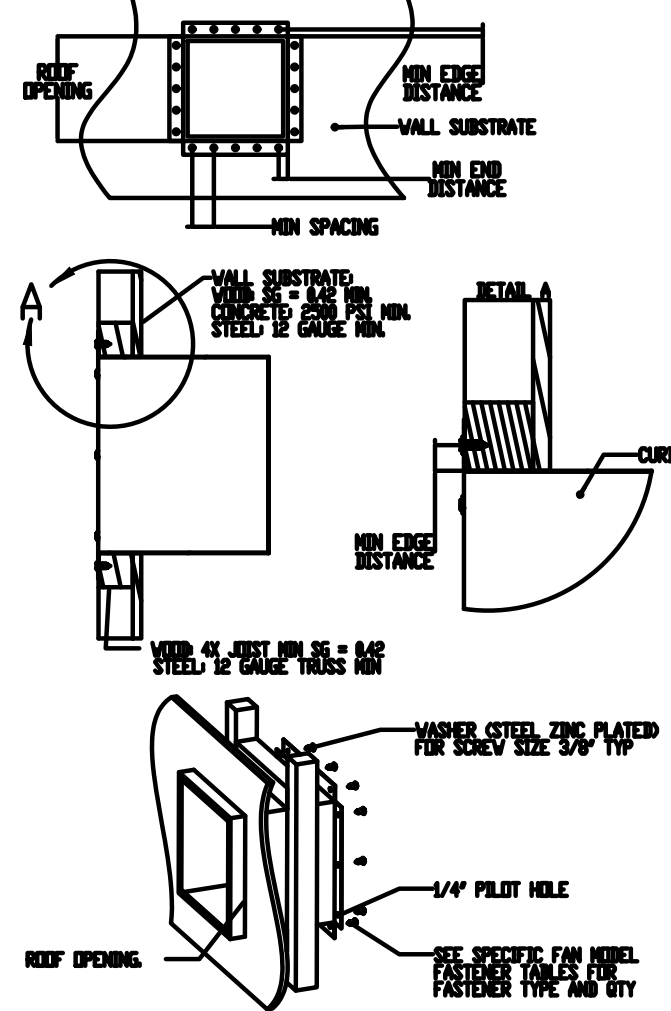
2. SECURE CURB TO ROOF FRAMING MEMBERS BY DRILLING 1/4" DIA PILOT HOLES IN CURB AT LOCATION SHOWN IN BOTTOM LEFT DIAGRAM. SEE PAGE 20 FOR FASTENER TYPE AND QTY.

DESIGN PRESSURE: +150W / -150W PSF
LARGE MISSILE IMPACT RESISTANT

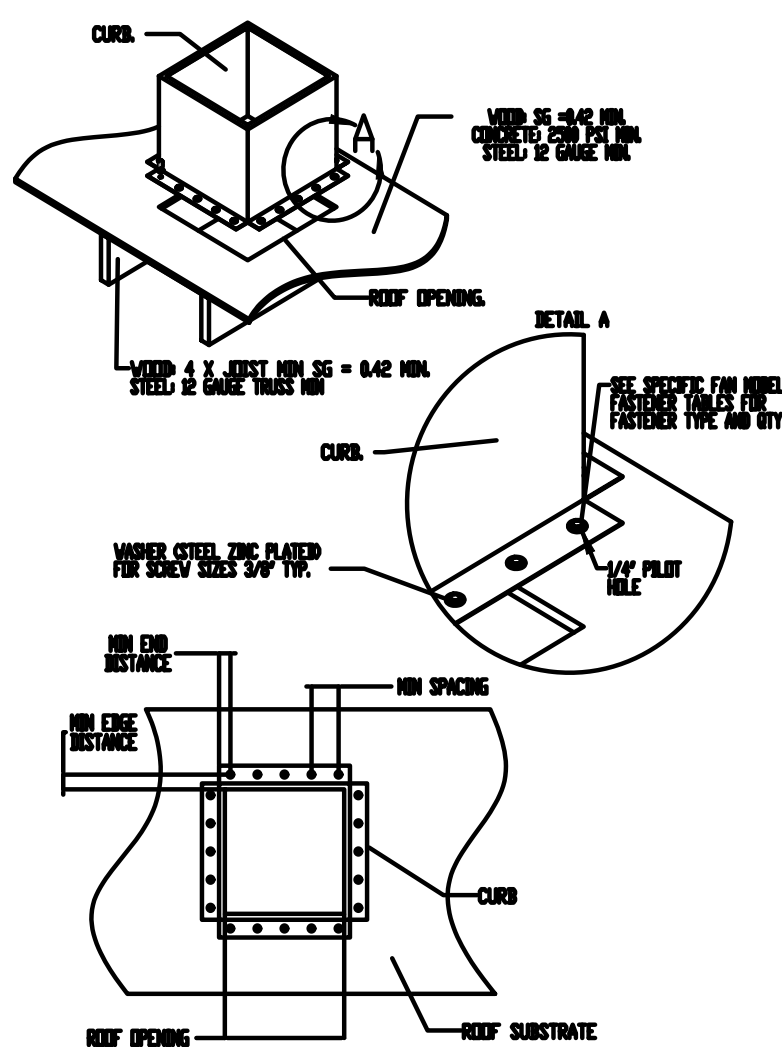
INSTALLATION FASTENER TYPES				
	Fan To Curb	Wood (SG = 0.42 Min.)	Steel (12 Gauge Min.)	Concrete (2500 psi Min. Cracked Concrete)
Fastener	1/4"-14 x 1" Self Drilling Screw (A307 OR BETTER)	3/8" Dia. Zinc Plated Lag Bolt	1/4"-14 Drill-Flex Self Drilling Screw	3/8" Dia. SS Hilti Kwik Bolt T2 Expansion Anchor
Minimum Thread Penetration	N/A	2"	12 Gauge	2-5/16"
Minimum Edge Distance	N/A	1-1/2"	3/8"	3"
Minimum End Distance	N/A	2-5/8"	3/8"	4"
Minimum Spacing	N/A	1-1/2"	3/4"	7"

INSTALLATION FASTENER QTY												
	Curb to Fan			Wood			Steel			Concrete		
Fan Model	Long Side	Short Side	Total	Long Side	Short Side	Total	Long Side	Per Side	Total	Long Side	Short Side	Total
Module 3	4	3	14	6	5	22	5	4	18	5	4	18

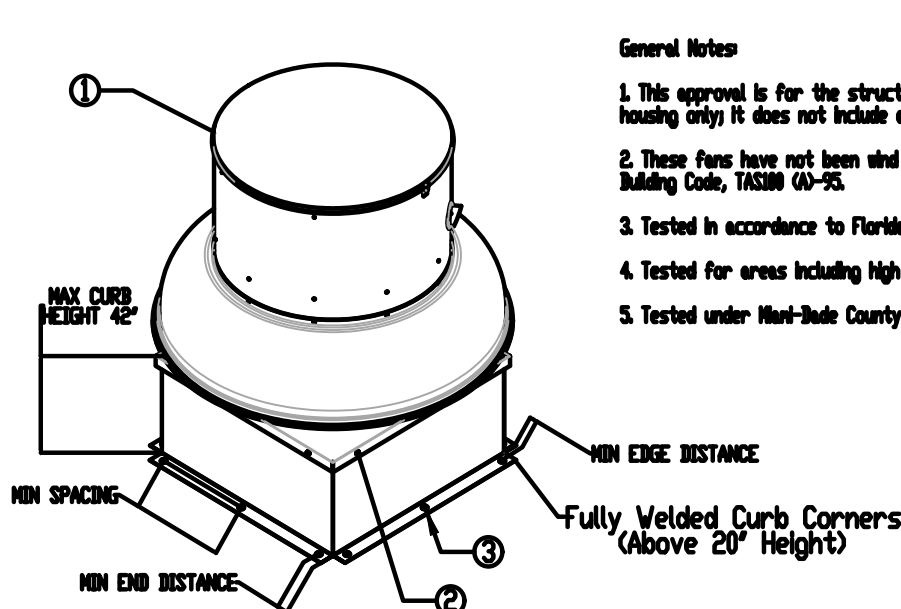
Miami-Dade County - Wall Curb Installation Guide



Miami-Dade County - Curb Roof Installation Guide



Miami-Dade NDA1 Aluminum Down-blast Fans



General Notes

1. This approval is for the structural capacity and impact rating of the exterior housing only. It does not include any interior mechanism or electrical part.
 2. These fans have not been wind tested for Wind Driven Rain Test per Florida Building Code, TAS209 (00-25).
 3. Tested in accordance to Florida Building Code test protocol TAS209, TAS292, TAS293.
 4. Tested for areas including high velocity hurricane zones.
 5. Tested under Miami-Dade County Notification number AT1-09033.

Installation Instructions

1. SECURE FAN BASE TO CURB USING 1/4"-14 X 1" ZINC PLATED STEEL SELF DRILLING SCREWS (A307) OR BETTER THROUGH FAN BASE. SEE PAGE 20 FOR QTY.

2. SECURE CURB TO ROOF FRAMING MEMBERS BY DRILLING 1/4" DIA PILOT HOLES IN THE CURB AT LOCATION SHOWN IN THE BOTTOM LEFT DIAGRAM. SEE PAGE 20 FOR FASTENER TYPE. USE TABLE B FOR FASTENER QTY.

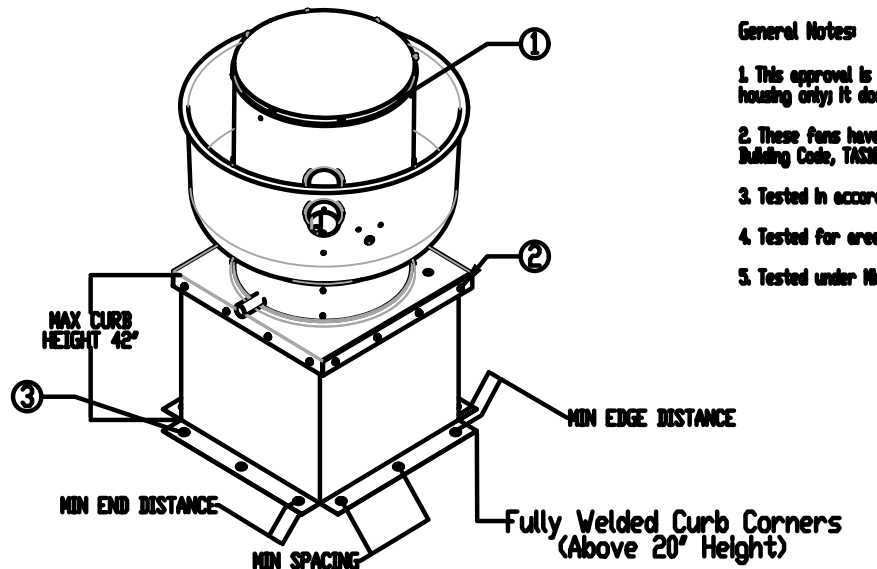
CURB MATERIAL:
20" HIGH & LESS = 20 GA. STEEL
ABOVE 20" THRU 42" = 16 GA. STEEL

DESIGN PRESSURE: +150W / -150W PSF
LARGE MISSILE IMPACT RESISTANT

INSTALLATION FASTENER TYPES				
	Fan To Curb	Wood (SG = 0.42 Min.)	Steel (12 Gauge Min.)	Concrete (2500 psi Min. Cracked Concrete)
Fastener	5/16"-18 x 2" Self Drilling Screw (ELCO DRILL-FLEX OR BETTER)	3/8" Dia. Zinc Plated Lag Bolt	1/4"-14 Drill-Flex Self Drilling Screw	3/8" Dia. SS Hilti Kwik Bolt T2 Expansion Anchor
Minimum Thread Penetration	N/A	2-1/2"	12 Gauge	2"
Minimum Edge Distance	N/A	1-1/2"	3/8"	3"
Minimum End Distance	N/A	2-5/8"	3/8"	3"
Minimum Spacing	N/A	1-1/2"	3/4"	5-1/2"

INSTALLATION FASTENER QTY																
	Curb to Fan (Roof)		Curb to Fan (Wall)		Wood (Roof)		Wood (Wall)		Steel (Roof)		Steel (Wall)		Concrete (Roof)		Concrete (Wall)	
Fan Model	Per Side	Total	Per Side	Total	Per Side	Total	Per Side	Total	Per Side	Total	Per Side	Total	Per Side	Total	Per Side	Total
DD7	3	12	3	12	3	12	3	12	4	16	4	16	3	12	3	12

Miami-Dade NDA1 Aluminum Up-blast Fans



General Notes

1. This approval is for the structural capacity and impact rating of the exterior housing only. It does not include any interior mechanism or electrical part.
 2. These fans have not been wind tested for Wind Driven Rain Test per Florida Building Code, TAS209 (00-25).
 3. Tested in accordance to Florida Building Code test protocol TAS209, TAS292, TAS293.
 4. Tested for areas including high velocity hurricane zones.
 5. Tested under Miami-Dade County Notification number AT1-09033.

Installation Instructions

1. SECURE FAN BASE TO CURB USING 1/4"-14 X 1" ZINC PLATED STEEL SELF DRILLING SCREWS (A307) OR BETTER THROUGH FAN BASE. SEE PAGE 20 FOR QTY.

2. SECURE CURB TO ROOF FRAMING MEMBERS BY DRILLING 1/4" DIA PILOT HOLES IN THE CURB AT LOCATION SHOWN IN THE BOTTOM LEFT DIAGRAM. SEE PAGE 20 FOR FASTENER TYPE. USE TABLE B FOR FASTENER QTY.

CURB MATERIAL:
20" HIGH & LESS = 20 GA. STEEL
ABOVE 20" THRU 42" = 16 GA. STEEL

DESIGN PRESSURE: +150W / -150W PSF
LARGE MISSILE IMPACT RESISTANT

INSTALLATION FASTENER TYPES				
	Fan To Curb	Wood (SG = 0.42 Min.)	Steel (12 Gauge Min.)	Concrete (2500 psi Min. Cracked Concrete)
Fastener	5/16"-18 x 2" Self Drilling Screw (ELCO DRILL-FLEX OR BETTER)	3/8" Dia. Zinc Plated Lag Bolt	1/4"-14 Drill-Flex Self Drilling Screw	3/8" Dia. SS Hilti Kwik Bolt T2 Expansion Anchor
Minimum Thread Penetration	N/A	2-1/2"	12 Gauge	2"
Minimum Edge Distance	N/A	1-1/2"	3/8"	3"
Minimum End Distance	N/A	2-5/8"	3/8"	3"
Minimum Spacing	N/A	1-1/2"	3/4"	5-1/2"

INSTALLATION FASTENER QTY																		
	Curb to Fan (Roof)			Curb to Fan (Wall)			Wood (Roof)		Wood (Wall)		Steel (Roof)		Steel (Wall)		Concrete (Roof)		Concrete (Wall)	
Fan Model	Per Side	Total		Per Side	Total		Per Side	Total	Per Side	Total	Per Side	Total	Per Side	Total	Per Side	Total	Per Side	Total
NDA16	3	12		3	12		5	20	5	20	6	24	6	24	5	20	5	20

Panda Express - Miami Gardens FL (P7331)

MIAMI, FL, 33169

DATE: 8/9/2018

DWG. #: 3507389

DRAWN BY: AHJ-86

SCALE: 3/4" = 1'-0"

MASTER DRAWING

SHEET NO. 4



PANDA RESTAURANT GROUP INC.

1683 Walnut Grove Ave.
Rosemead, California
91770

Telephone: 626.799.9898
Facsimile: 626.372.8288

All ideas, designs, arrangement and plans indicated or represented by this drawing are the property of Panda Express Inc. and were created for use on this specific project. None of these ideas, designs, arrangements or plans may be used by or disclosed to any person, firm, or corporation without the written permission of Panda Express Inc.

REVISIONS:

1 BLDG. DEPT. COMMENTS 12-02-20

ISSUE DATE:

1 CHECK SET 06-18-19
2 PERMIT SET 03-23-20
3 BID SET 01-04-21

DRAWN BY: JAD / DJM

PANDA PROJECT #: S4-19-D6240

ARCH PROJECT #: P7331



PANDA EXPRESS

END CAP - TENANT BUILD OUT
5750 NW 183RD ST
HIALEAH, FL 33015

M-403

HOOD DETAIL PLAN