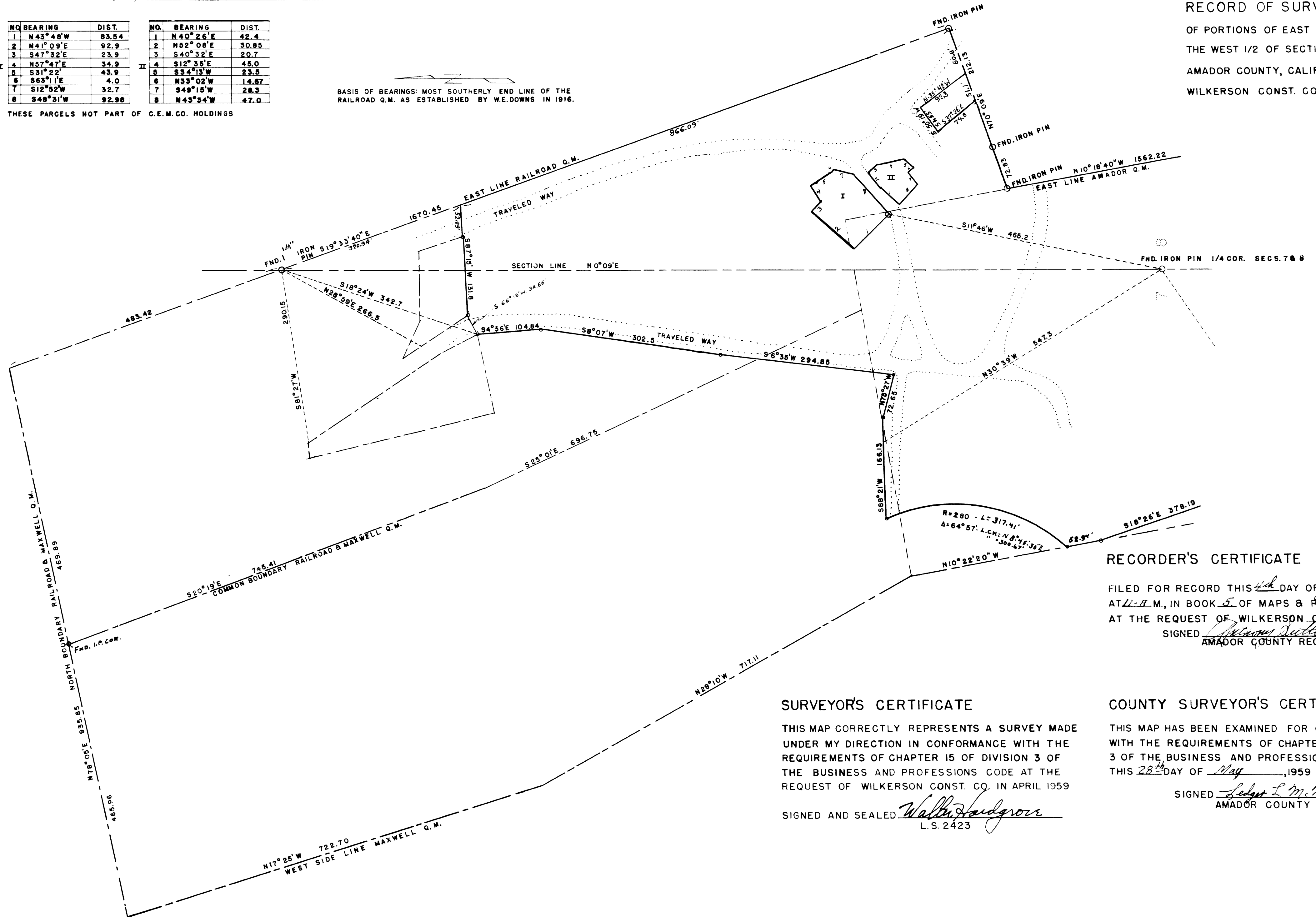


RECORD OF SURVEY  
OF PORTIONS OF EAST 1/2 OF SECTION 7 &  
THE WEST 1/2 OF SECTION 8, T.6N., R.1E., IN  
AMADOR COUNTY, CALIFORNIA. FOR  
WILKERSON CONST. CO.

| NO. | BEARING  | DIST. | NO. | BEARING  | DIST. |
|-----|----------|-------|-----|----------|-------|
| 1   | N43°48'W | 83.54 | 1   | N40°26'E | 42.4  |
| 2   | N41°09'E | 92.9  | 2   | N52°08'E | 30.85 |
| 3   | S47°32'E | 23.9  | 3   | S40°32'E | 20.7  |
| 4   | N57°47'E | 34.9  | 4   | S12°35'E | 45.0  |
| 5   | S31°22'E | 43.9  | 5   | S34°13'W | 23.5  |
| 6   | S63°11'E | 4.0   | 6   | N33°02'W | 14.67 |
| 7   | S12°52'W | 32.7  | 7   | S49°15'W | 28.3  |
| 8   | S48°31'W | 92.98 | 8   | N43°34'W | 47.0  |

THESE PARCELS NOT PART OF C.E.M.CO. HOLDINGS

BASIS OF BEARINGS: MOST SOUTHERLY END LINE OF THE  
RAILROAD Q.M. AS ESTABLISHED BY W.E.DOWNS IN 1916.



RECORDER'S CERTIFICATE

FILED FOR RECORD THIS 4th DAY OF June 1959,  
AT 11-17 A.M., IN BOOK 5 OF MAPS & PLATS, PAGE 84,  
AT THE REQUEST OF WILKERSON CONST. CO.  
SIGNED Arthur Sutton Recorder  
AMADOR COUNTY RECORDER.

SURVEYOR'S CERTIFICATE

THIS MAP CORRECTLY REPRESENTS A SURVEY MADE  
UNDER MY DIRECTION IN CONFORMANCE WITH THE  
REQUIREMENTS OF CHAPTER 15 OF DIVISION 3 OF  
THE BUSINESS AND PROFESSIONS CODE AT THE  
REQUEST OF WILKERSON CONST. CO. IN APRIL 1959

SIGNED AND SEALED Walter H. Audgrov  
L.S. 2423

COUNTY SURVEYOR'S CERTIFICATE

THIS MAP HAS BEEN EXAMINED FOR CONFORMANCE  
WITH THE REQUIREMENTS OF CHAPTER 15 OF DIVISION  
3 OF THE BUSINESS AND PROFESSIONS CODE,  
THIS 28th DAY OF May, 1959

SIGNED Ledger L. McMin  
AMADOR COUNTY SURVEYOR