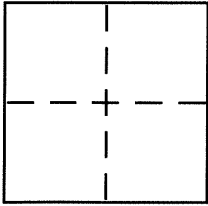


CORNER RECORDDocument Number CR 7486City of BERKELEYCounty of ALAMEDA, CaliforniaBrief Legal Description LOT 727, BERKELEY VIEW TERRACE (12 M 62)**CORNER TYPE**Government Corner ☐ Control ☐Meander ☐ Property ☒Rancho ☐ Other ☐Date of Survey AUG. 18, 2015**COORDINATES (Optional)**

N. _____

E. _____

Zone _____ NAD27 ☐ NAD83 ☐

NAD83 Epoch _____

Elev. _____

Vert. Datum: NGVD29 ☐ NAVD88 ☐Meas. Units: Metric ☐ Imperial ☐
Corner – Left as found ☐ Found and tagged ☐ Established ☒ Reestablished ☐ Rebuilt ☐

Identification and type of corner found: Evidence used to identify or procedure used to establish or reestablish the corner:

SEE OTHER SIDE

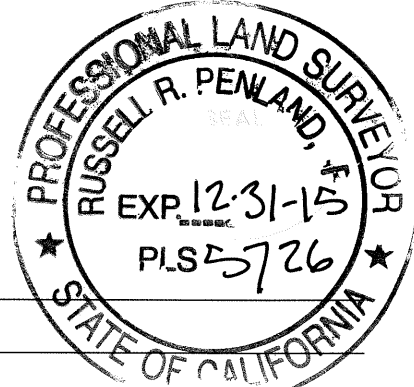
A description of the physical condition of the monument as found and as set or reset: _____

SEE OTHER SIDE**SURVEYOR'S STATEMENT**

This Corner Record was prepared by me or under my direction in conformance with

the Land Surveyor's Act on AUGUST 27, 2015Signed Robert J. Brunel P.L.S. or R.C.E. No. 4961**COUNTY SURVEYOR'S STATEMENT**This Corner Record was received 8-31-15and examined and filed 9-30-15Signed Russell R. Penland P.L.S. or R.C.E. No. 5726Title COUNTY SURVEYOR

County Surveyor's Comment _____



CORNER RECORD

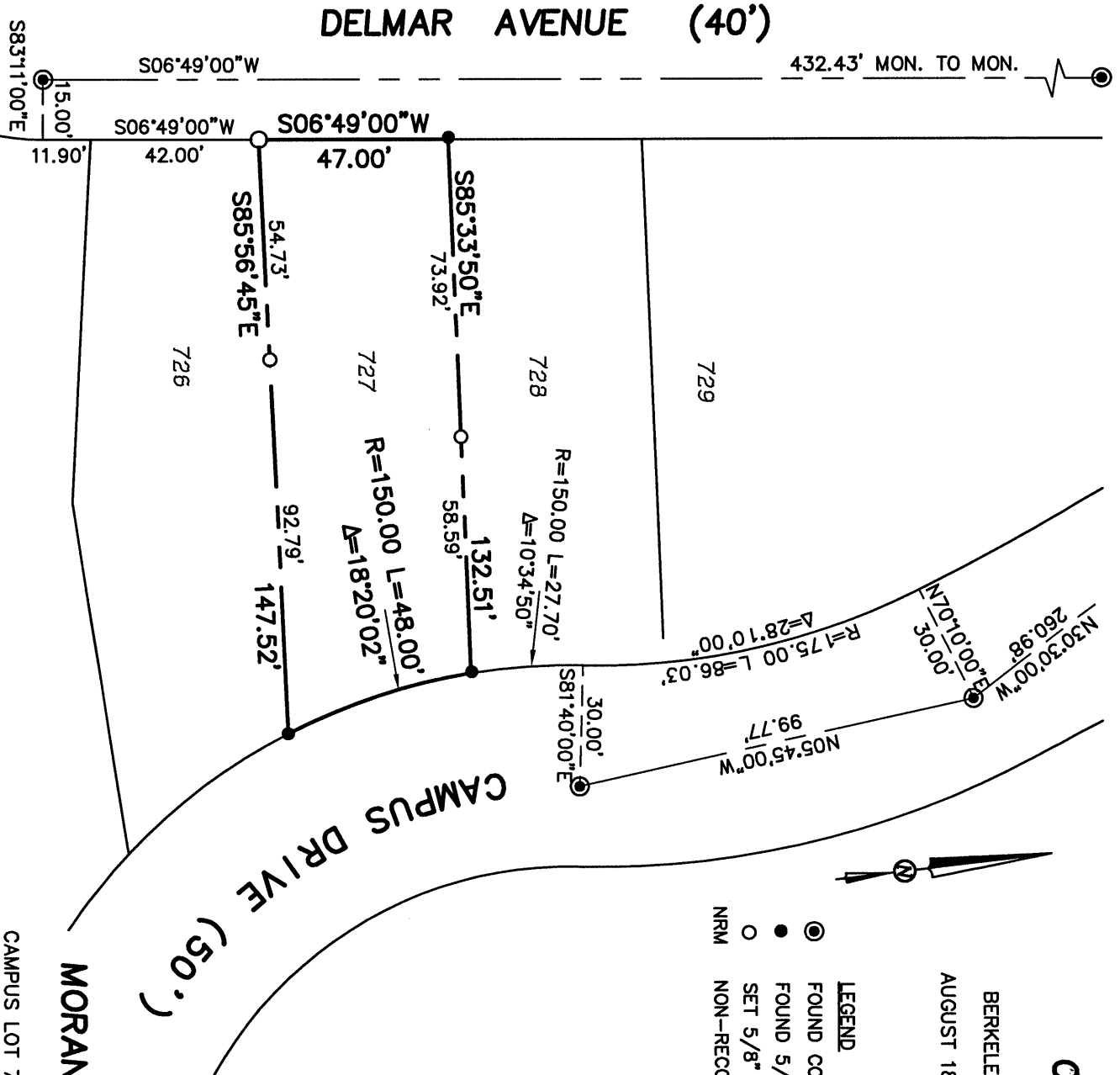
LOT 727, BERKELEY
VIEW TERRACE (12 M 62)
BERKELEY, ALAMEDA COUNTY, CALIFORNIA

AUGUST 18, 2015

SCALE: 1" = 40'

LEGEND

- FOUND CONCRETE MONUMENT PER (12 M 62)
- FOUND 5/8" REBAR WITH CAP, LS 5252, NRM
- SET 5/8" REBAR WITH PLASTIC CAP, LS 4961
- NON-RECORD MONUMENT



MORAN ENGINEERING, INC.

BERKELEY, CALIFORNIA
CAMPUS LOT 727 CR.DWG JOB NO. 15-9221