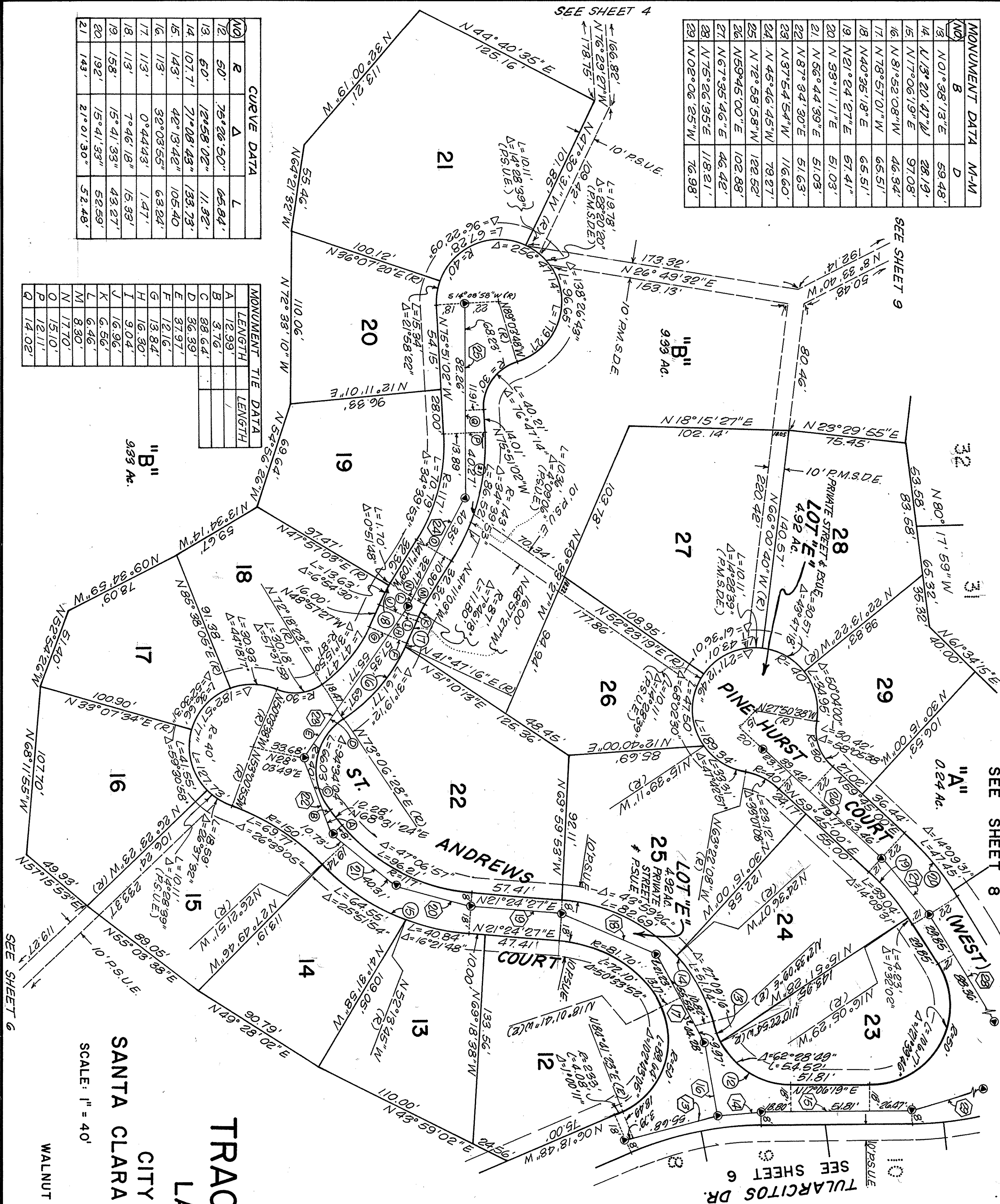


MONUMENT DATA	M-M
NO. B D	
13	N 01° 38' 13" E 59.48'
14	N 13° 20' 47" W 28.19'
15	N 17° 06' 19" E 97.08'
16	N 81° 52' 08" W 46.34'
17	N 78° 57' 01" W 65.51'
18	N 40° 35' 18" E 65.51'
19	N 21° 24' 27" E 67.41'
20	N 33° 11' 11" E 51.03'
21	N 56° 44' 39" E 51.03'
22	N 87° 34' 30" E 51.63'
23	N 37° 54' 54" W 116.60'
24	N 45° 46' 45" W 79.27'
25	N 72° 58' 58" W 122.52'
26	N 59° 45' 00" E 102.88'
27	N 67° 35' 46" E 46.42'
28	N 75° 26' 35" E 118.21'
29	N 02° 06' 25" W 76.98'

CURVE DATA	
NO. R Δ L	
12	50' 75° 26' 50" 65.84'
13	50' 12° 58' 02" 11.32'
14	107.7' 71° 08' 43" 133.73'
15	143' 42° 13' 42" 105.40'
16	113' 32° 03' 55" 63.24'
17	113' 0° 44' 43" 1.47'
18	113' 7° 46' 18" 15.33'
19	158' 15° 41' 33" 43.27'
20	192' 15° 41' 33" 52.59'
21	143' 21° 01' 30" 52.48'

MONUMENT TIE DATA	
A B C D E F G H I J K L M N O P Q	LENGTH LENGTH
	12.93'
	3.76'
	38.64'
	36.39'
	37.97'
	12.16'
	13.84'
	16.30'
	9.04'
	16.96'
	6.56'
	6.46'
	8.30'
	17.70'
	15.10'
	12.11'
	14.02'



BASIS OF BEARINGS

The bearing of the line between triangulation stations Calera and Minnis - N 34° 26' 15" W - as established by the U.S.C. & G.S. in the City of Milpitas area was used as the basis of bearings shown hereon.

NOTE

Bearings and distances shown hereon conform with California coordinate system, Zone III; multiply distances by 0.9999423 to obtain grid distances.

LEGEND

- Set Standard Monument
- Found Standard Monument
- Set Iron Pipe
- Found Iron Pipe
- Public Service & Utility Easement
- Storm Drain Easement

NOTE

Each lot owner shall have an easement of ingress and egress to his lot and across Lot E" for himself, his licensees, visitors, tenant and visitors.

TRACT 6452

LA CUESTA

CITY OF MILPITAS
SANTA CLARA COUNTY, CALIFORNIA

SCALE: 1" = 40'

MARCH, 1980

PRC TOUPS
WALNUT CREEK, CALIFORNIA

SHEET 7 OF 12