

Parcel MAP 7874

MAP BK 278

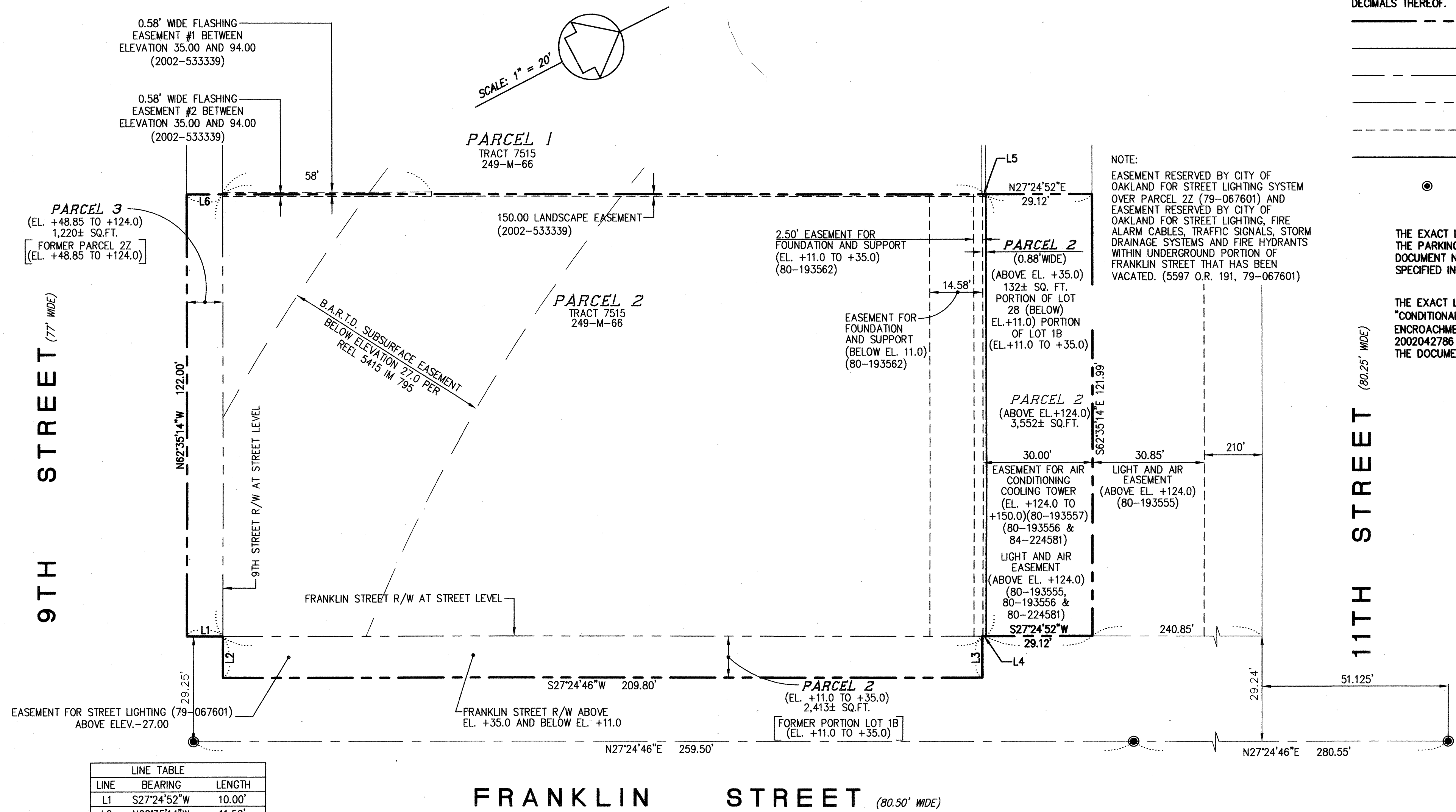
Pg. 29

- NOTES AND LEGEND**
ALL DISTANCES AND DIMENSIONS ARE IN FEET AND DECIMALS THEREOF.
- EXTERIOR BOUNDARY LINE
 - EXISTING BOUNDARY LINE
 - MONUMENT LINE
 - EXISTING RIGHT OF WAY LINE
 - EXISTING EASEMENT LINE
 - PROPOSED PARCEL LINE
 - EXISTING CITY MONUMENT

THE EXACT LOCATION OF THE RIGHTS CONTAINED IN THE PARKING LICENSE AGREEMENT RECORDED AT DOCUMENT No. 2000134814, ALAMEDA COUNTY IS NOT SPECIFIED IN THE DOCUMENT.

THE EXACT LOCATION OF RIGHTS GRANTED IN THE "CONDITIONAL REVOCABLE PERMIT FOR THE ENCROACHMENT" RECORDED AT DOCUMENT No. 2002042786, ALAMEDA COUNTY IS NOT SPECIFIED IN THE DOCUMENT.

NOTE:
EASEMENT RESERVED BY CITY OF OAKLAND FOR STREET LIGHTING SYSTEM OVER PARCEL 2Z (79-067601) AND EASEMENT RESERVED BY CITY OF OAKLAND FOR STREET LIGHTING, FIRE ALARM CABLES, TRAFFIC SIGNALS, STORM DRAINAGE SYSTEMS AND FIRE HYDRANTS WITHIN UNDERGROUND PORTION OF FRANKLIN STREET THAT HAS BEEN VACATED. (5597 O.R. 191, 79-067601)



LINE TABLE		
LINE	BEARING	LENGTH
L1	S27°24'52"W	10.00'
L2	N62°35'14"W	11.50'
L3	S62°35'14"E	11.50'
L4	N27°24'46"E	1.08'
L5	N27°24'52"E	1.08'
L6	N27°24'52"E	10.00'

BASIS OF BEARING
THE BEARING NORTH 27°24'46" EAST OF THE MONUMENT LINE OF FRANKLIN STREET AS SHOWN ON THAT CERTAIN MAP ENTITLED PARCEL MAP No. 7515, FILED FOR RECORD ON MARCH 22, 2000 AT BOOK 249 OF MAPS AT PAGES 66 & 67, ALAMEDA COUNTY RECORDS WAS TAKEN AS BASIS OF BEARINGS FOR THIS MAP.

BENCHMARK
CUT SQUARE IN TOP OF CURB AT SOUTHERLY EDGE OF HANDICAP BETWEEN RETURNS AT THE SOUTHWEST CORNER OF 9th AND FRANKLIN STREET.
BM# 3994
ELEV=33.900 CITY OF OAKLAND DATUM.

★ USE WITH CAUTION ★
THIS IS A PUBLIC WORKS DEPARTMENT
WORKING COPY OF AN OFFICIAL MAP
ON FILE IN THE OFFICE OF THE COUNTY
RECORDER, COUNTY OF ALAMEDA. OF-
FICE INFORMATION OR CALCULATIONS
MAY HAVE BEEN ADDED HEREON.

PARCEL MAP NO. 7874

CITY OF OAKLAND ALAMEDA COUNTY CALIFORNIA

LOTS 1, 2, & 3 FOR COMMERCIAL PURPOSES. LOT 4 FOR RESIDENTIAL CONDOMINIUM PURPOSES.
BEING A RESUBDIVISION OF PARCEL 2 AND PARCEL 3 OF PARCEL MAP No. 7515, FILED MARCH 22, 2000 IN BOOK 249 OF MAPS AT PAGES 66 AND 67, ALAMEDA COUNTY RECORDS AND LYING ENTIRELY WITHIN THE CITY OF OAKLAND, COUNTY OF ALAMEDA, CALIFORNIA.

AUGUST 2004

SCALE: 1"=20'

SANDIS HUMBER JONES
CIVIL ENGINEERS SURVEYORS PLANNERS
605 Castro Street Mountain View CA 94041-2011 (650) 969-6900

SHEET 2 OF 5 600110

OCT 27 2004

Filed 9-29-04

278 / 29

12/01/03
PARCEL MAP.dwg