

Legend

- Dimensional point only
- Set 5/8" rebar w/plastic cap, RCE 19461
- Found 3/4" rebar tagged stamped "LS.3184" per M.C.2, Dr.47, Pg.77, M.C.R.
- Found toppler monument, LS.3184, in cypress tree M.C.2, Dr.47, Pg.77, M.C.R.
- Record Data per M.C.2, Dr.47, Pg.77, M.C.R.
- Record Data per Instrument Number 2001-19452
- Record data agrees with measured unless shown otherwise

Basis of Bearings

The bearing South 88°46'54" East, between found monuments on the North line of Parcel 4 as shown on that Parcel Map Recorded in Map Case 2, Drawer 47, Page 77, Mendocino County Records, was used for the basis of bearings shown hereon.

Notes

- The property created by this map is located within the Coastal Zone and in a particularly sensitive area relative to coastal resources. Future development of the site must comply with provisions of Chapter 20, Division II of the Mendocino County Code, which includes at a minimum restrictions on building design, color, height, bulk, types of exterior finishes, visual screening, lighting, geologic constraints and biological / botanical resources. Future development will be confined to the building envelopes as described on the Exhibit Map on file in the Department of Planning and Building Services or as identified on addendum to the November 25, 2006 Botanical Survey as approved by the Department of Fish and Game. development on individual parcels shall, at a minimum, be subject to the mitigation measures for future development contained within the Botanical Survey. Any deviation of these standards must be reviewed and approved by the County of Mendocino.
- In the event that archaeological resources are encountered during development of the property, work within the immediate vicinity of the find shall be halted until all requirements of Chapter 22.12 of the Mendocino County Code relating to archaeological discoveries have been satisfied.
- The access road, driveway and interior circulation routes shall be maintained in such a manner as to insure minimum dust generation subject to Air Quality Management District Regulation Rule 430. Any rock material, including natural rock from the property, used for surfacing must comply with Air Quality Management District regulations regarding asbestos content.
- Future development shall be limited to those building envelopes depicted on the Exhibit Map on file with the Department of Planning and Building Services.

PARCEL MAP

Of Minor Subdivision NO. EDMJ 91-2006  
being a portion of Section 31,  
Township 17 North, Range 17 West,  
Mount Diablo Base and Meridian

Mendocino County,  
Scale 1" = 100'  
Sheet two of two  
California  
January, 2008

Prepared by:  
S. P. Willy & Associates  
703d North Main Street  
Fort Bragg, CA 94737  
Phone (707)964-8865

#025

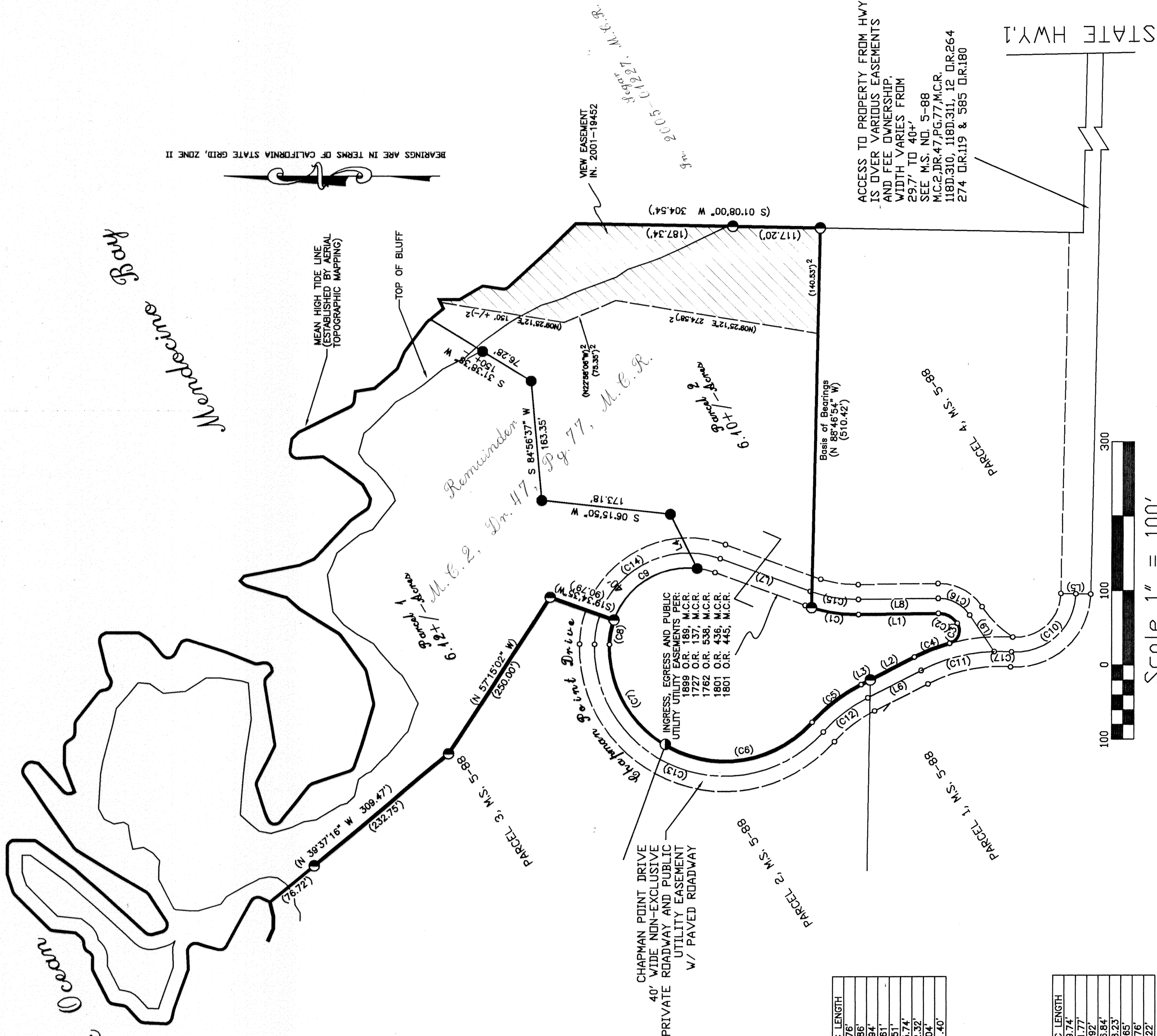
Sub # 04158.00

Map

Drawer

Page

26



THE LOCATION OF THE FOLLOWING  
EASEMENTS COULD NOT BE EXACTLY  
LOCATED FROM RECORD.  
1793 O.R. 641 M.C.R.  
IN. NO. 2001-19450 M.C.R.

PROPERTY LINE DATA

LINE	BEARING	DISTANCE			
L1	S 00°41'57" E	106.73'			
L2	S 27°00'00" E	66.00'			
L3	N 27°00'00" W	14.00'			
L4	S 63°24'54" W	80.72'			
CURVE			DELTA ANGLE	RADIUS	ARC LENGTH
C1	18°15'54"			200.00'	63.76'
C2	57°01'23"			30.00'	29.86'
C3	108°16'25"			17.96'	33.94'
C4	11°35'51"			250.00'	50.61'
C5	21°45'00"			220.00'	83.51'
C6	78°45'00"			155.00'	215.74'
C7	60°00'00"			155.00'	162.32'
C8	18°34'35"			105.00'	34.04'
C9	77°09'38"			105.00'	141.40'

40' ROADWAY DATA

LINE	BEARING	DISTANCE			
L5	S 01°13'06" W	40.00'			
L6	N 27°00'00" W	80.00'			
L7	S 20°11'48" W	128.73'			
L8	S 00°41'57" E	106.73'			
L9	S 56°19'26" W	58.46'			
CURVE			DELTA ANGLE	RADIUS	ARC LENGTH
C10			92°55'03"	80.00'	129.74'
C11			29°21'08"	230.00'	101.77'
C12			21°45'00"	200.00'	75.92'
C13			139°45'00"	175.00'	426.84'
C14			109°11'48"	125.00'	238.23'
C15			20°53'45"	180.00'	65.65'
C16			57°01'23"	50.00'	49.76'
C17			05°47'01"	230.00'	23.22'