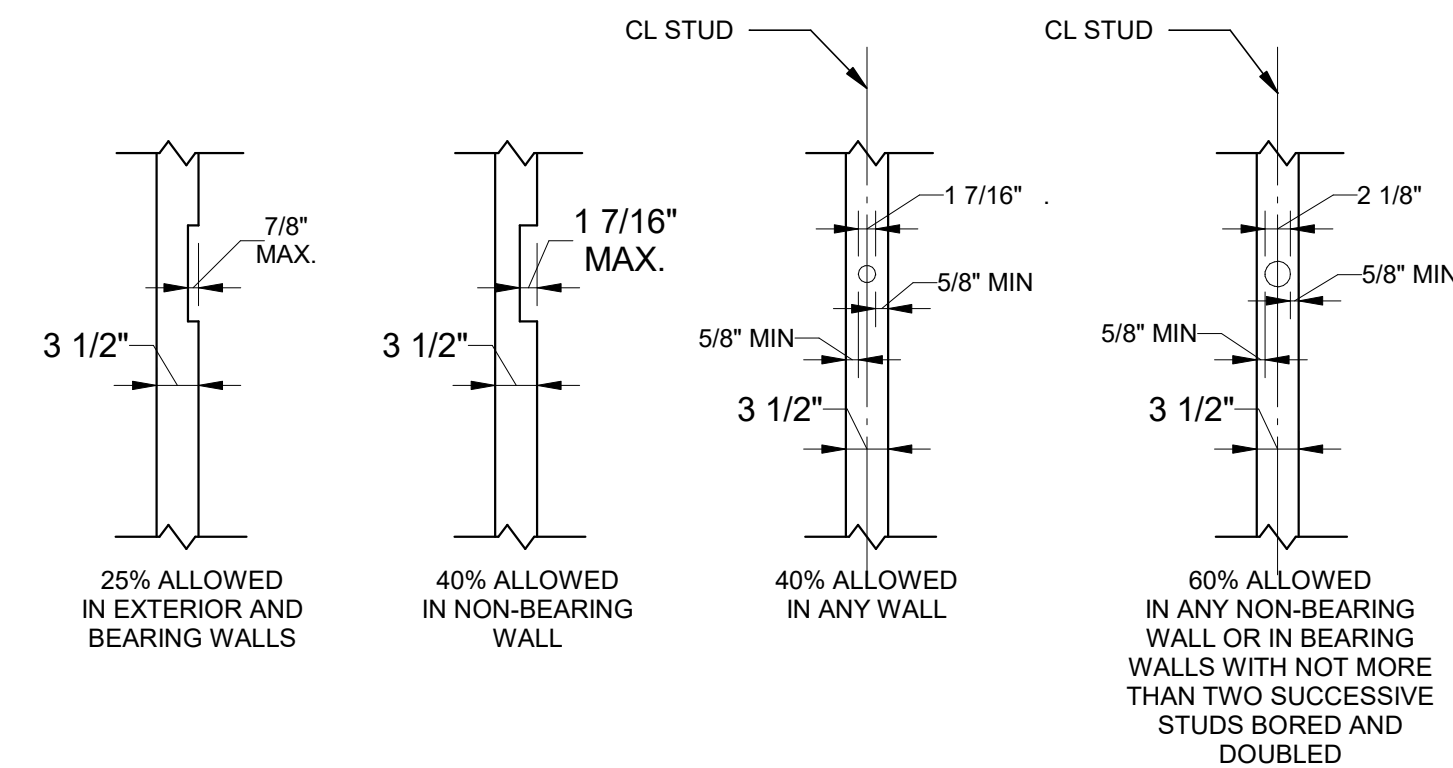
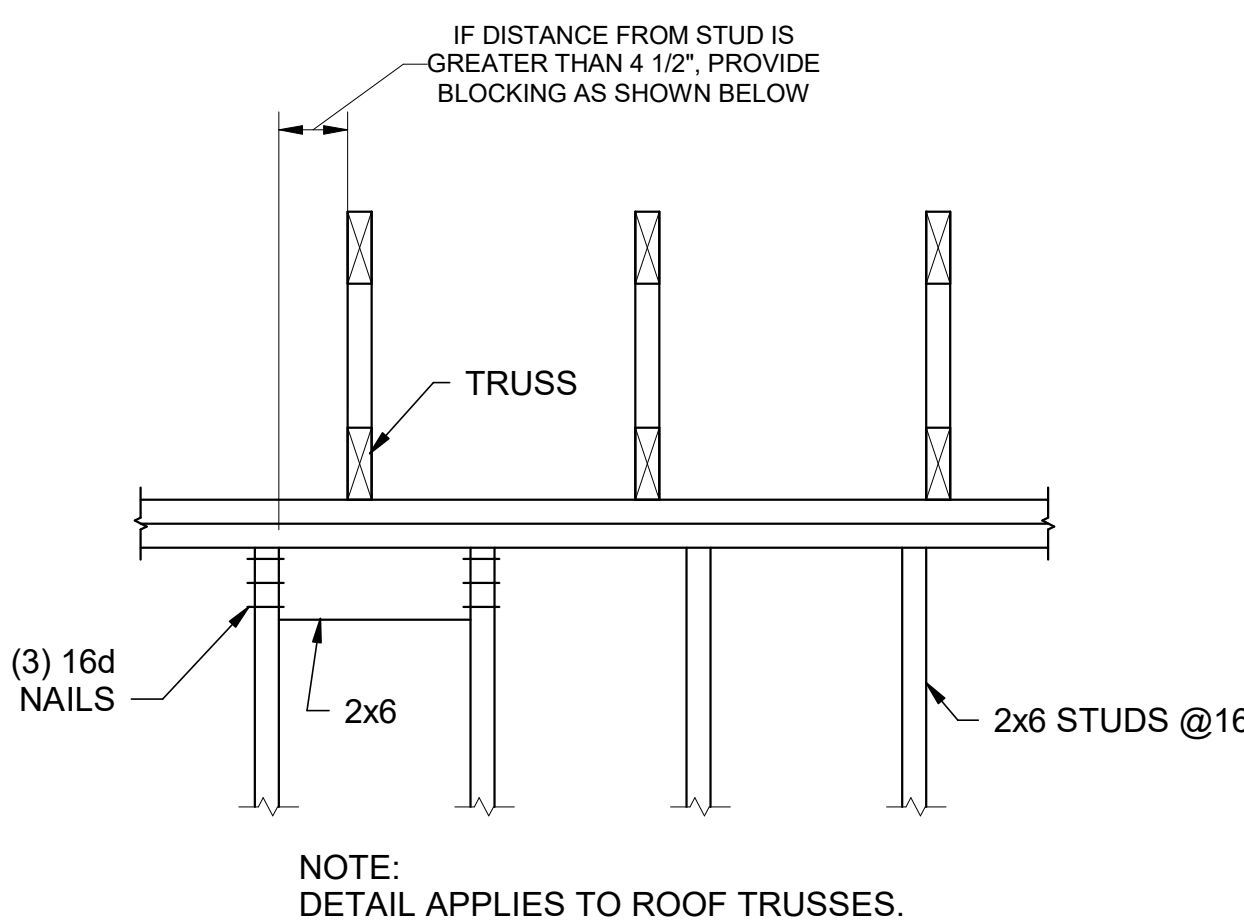


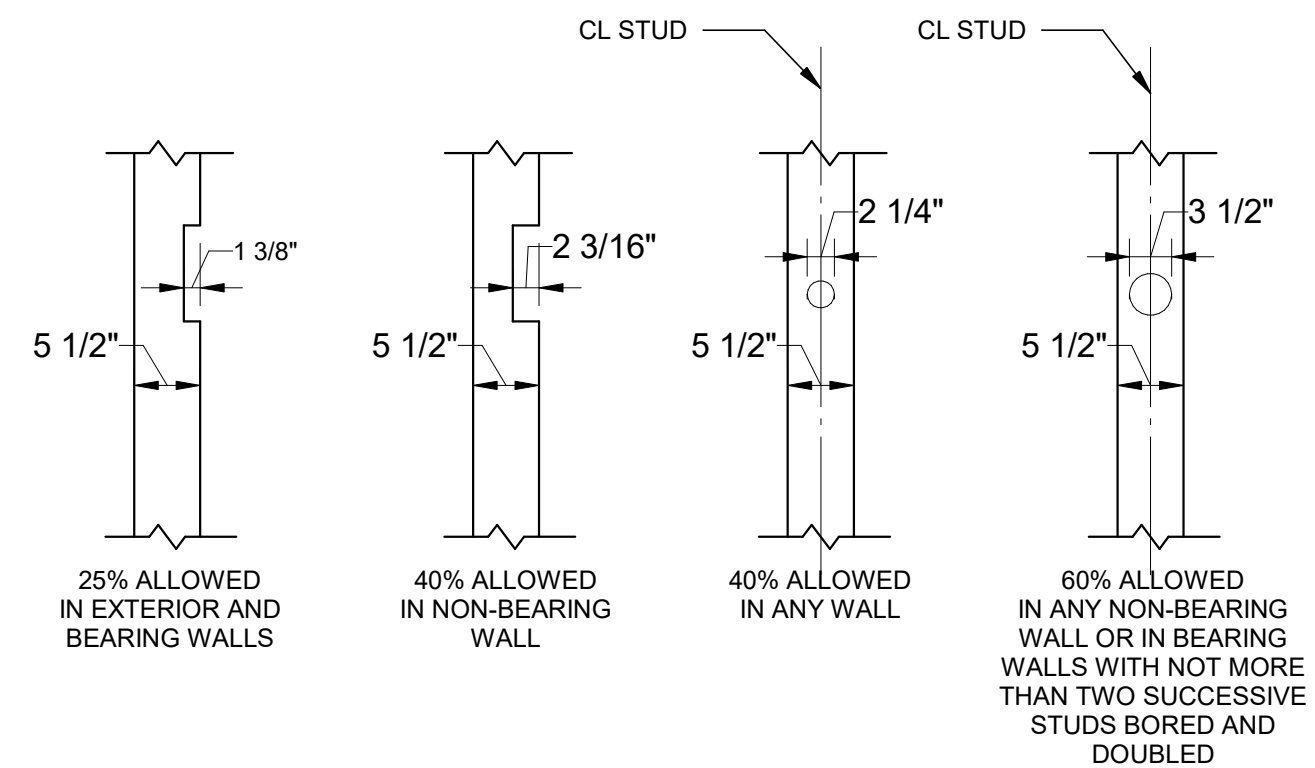
CONNECTION	FASTENING a,m	FASTENING
1. JOIST TO SILL OR GIRDER	3 - 8d COMMON 3 - 3"x0.131" NAILS 3 - 3" 14 GAGE STAPLES	TOENAIL
2. BRIDGING TO JOIST	2 - 8d COMMON 2 - 3"x0.131" NAILS 2 - 3" 14 GAGE STAPLES	TOENAIL EACH END
3. 1"x6" SUBFLOOR OR LESS TO EACH JOIST	2 - 8d COMMON	FACE NAIL
4. WIDER THAN 1"x6" SUBFLOOR TO EACH JOIST	3 - 8d COMMON	FACE NAIL
5. 2" SUBFLOOR TO JOIST OR GIRDER	2 - 16d COMMON	BLIND AND FACE NAIL
6. SOLE PLATE TO JOIST OR BLOCKING	16d AT 16" OC 3"x0.131" NAILS @ 8" OC 3" 14 GAGE STAPLES @ 12" OC	TYPICAL FACE NAIL
SOLE PLATE TO JOIST OR BLOCKING AT BRACED WALL PANEL	3 - 16d @ 16" OC 4 - 3"x0.131" NAILS @ 16" 4 - 3" 14 GAGE STAPLES PER 16"	BRACED WALL PANELS
7. TOP PLATE TO STUD	1 - SIMPSON SOWC15600	TOENAIL
8. STUD TO SOLE PLATE	1 - SIMPSON SOWC15450	TOENAIL
9. DOUBLE STUDS	16d @ 24" OC 3"x0.131" NAILS @ 8" OC 3" 14 GAGE STAPLES 8" OC	FACE NAIL
10. DOUBLE TOP PLATES	16d @ 16" OC 3"x0.131" NAILS @ 12" OC 3" 14 GAGE STAPLES @ 12" OC	TYPICAL FACE NAIL
DOUBLE TOP PLATES	8 - 16d COMMON 12 - 3"x0.131" NAILS 12 - 3" 14 GAGE STAPLES	LAP SPLICE
11. BLOCKING BETWEEN JOIST OR RAFTERS TO TOP PLATE	3 - 8d COMMON 3 - 3"x0.131" NAILS 3 - 3" 14 GAGE STAPLES	TOENAIL
12. RIM JOIST TO TOP PLATE	8d @ 6" OC 3"x0.131" NAILS @ 6" OC 3" 14 GAGE STAPLES @ 6" OC	TOENAIL
13. TOP PLATES, LAPS AND INTERSECTIONS	2 - 16d COMMON 3 - 3"x0.131" NAILS 3 - 3" 14 GAGE STAPLES	FACE NAIL
14. CONTINUOUS HEADER, TWO PIECES	16d COMMON	16" OC ALONG EDGE
15. CEILING JOIST TO PLATE	3 - 8d COMMON 5 - 3"x0.131" NAILS 5 - 3" 14 GAGE STAPLES	TOENAIL
16. CONTINUOUS HEADER TO STUD	4 - 8d COMMON	TOENAIL
17. CEILING JOIST, LAP OVER PARTITIONS (SEE SECTION 2308.10.4.1, TABLE 2308.10.4.1)	3 - 16d COMMON MINIMUM, TABLE 2308.10.4.1 4 - 3"x0.131" NAILS 4 - 3" 14 GAGE STAPLES	FACE NAIL
18. CEILING JOIST TO PARALLEL RAFTERS (SEE SECTION 2308.10.4.1, TABLE 2308.10.4.1)	3 - 16d COMMON MINIMUM, TABLE 2308.10.4.1 4 - 3"x0.131" NAILS 4 - 3" 14 GAGE STAPLES	FACE NAIL
19. RAFTER TO PLATE (SEE SECTION 2308.10.1, TABLE 2308.10.1)	3 - 8d COMMON 3 - 3"x0.131" NAILS 3 - 3" 14 GAGE STAPLES	TOENAIL
20. 1" DIAGONAL BRACE TO EACH STUD AND PLATE	2 - 8d COMMON 2 - 3"x0.131" NAILS 2 - 3" 14 GAGE STAPLES	FACE NAIL
21. 1"x8" SHEATHING TO EACH BEARING WALL	2 - 8d COMMON	FACE NAIL
22. WIDER THAN 1"x8" SHEATHING TO EACH BEARING	3 - 8d COMMON	FACE NAIL
23. BUILT-UP CORNER STUDS	16d COMMON 3"x0.131" NAILS 3" 14 GAGE STAPLES	24" OC 16" OC 16" OC
24. BUILT-UP GIRDER AND BEAMS	20d COMMON 32" OC 3"x0.131" NAIL @ 24" OC 3" 14 GAGE STAPLES @24" OC 2 - 20d COMMON 3 - 3"x0.131" NAILS 3 - 3" 14 GAGE STAPLES	FACE NAIL AT TOP AND BOTTOM STAGGERED ON OPPOSITE SIDES FACE NAIL AT ENDS AND AT EACH SPLICE
25. 2" PLANKS	16d COMMON	AT EACH BEARING
26. COLLAR TIE TO RAFTER	3 - 10d COMMON 4 - 3"x0.131" NAILS 4 - 3" 14 GAGE STAPLES	FACE NAIL
27. JACK RAFTER TO HIP	3 - 10d COMMON 4 - 3"x0.131" NAILS 4 - 3" 14 GAGE STAPLES 2 - 16d COMMON 3 - 3"x0.131" NAILS 3 - 3" 14 GAGE STAPLES	TOENAIL FACE NAIL
28. ROOF RAFTER TO 2-BY RIDGE BEAM	2 - 16d COMMON 3 - 3"x0.131" NAILS 3 - 3" 14 GAGE STAPLES 2 - 16d COMMON 3 - 3"x0.131" NAILS 3 - 3" 14 GAGE STAPLES	TOENAIL FACE NAIL
29. JOIST TO BAND JOIST	3 - 16d COMMON 5 - 3"x0.131" NAILS 5 - 3" 14 GAGE STAPLES	FACE NAIL
30. LEDGER STRIP	3 - 16d COMMON 4 - 3"x0.131" NAILS 4 - 3" 14 GAGE STAPLES	FACE NAIL



2x4 Stud Walls

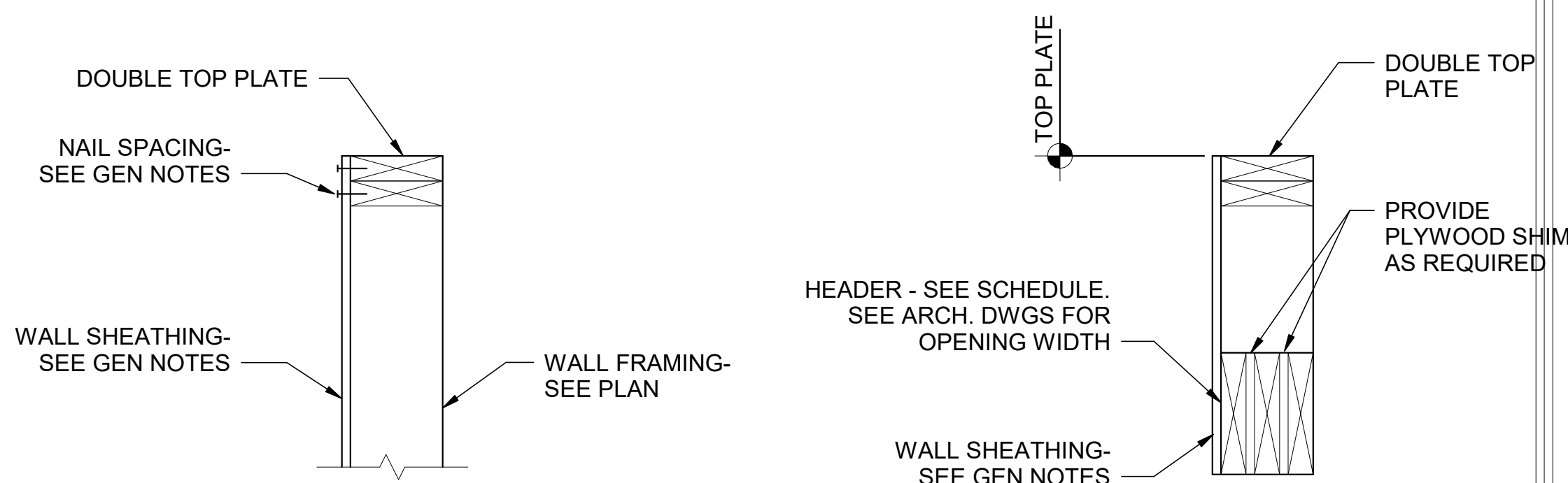


Truss Bearing Detail



2x6 Stud Walls

Allowable Framing Notch Detail

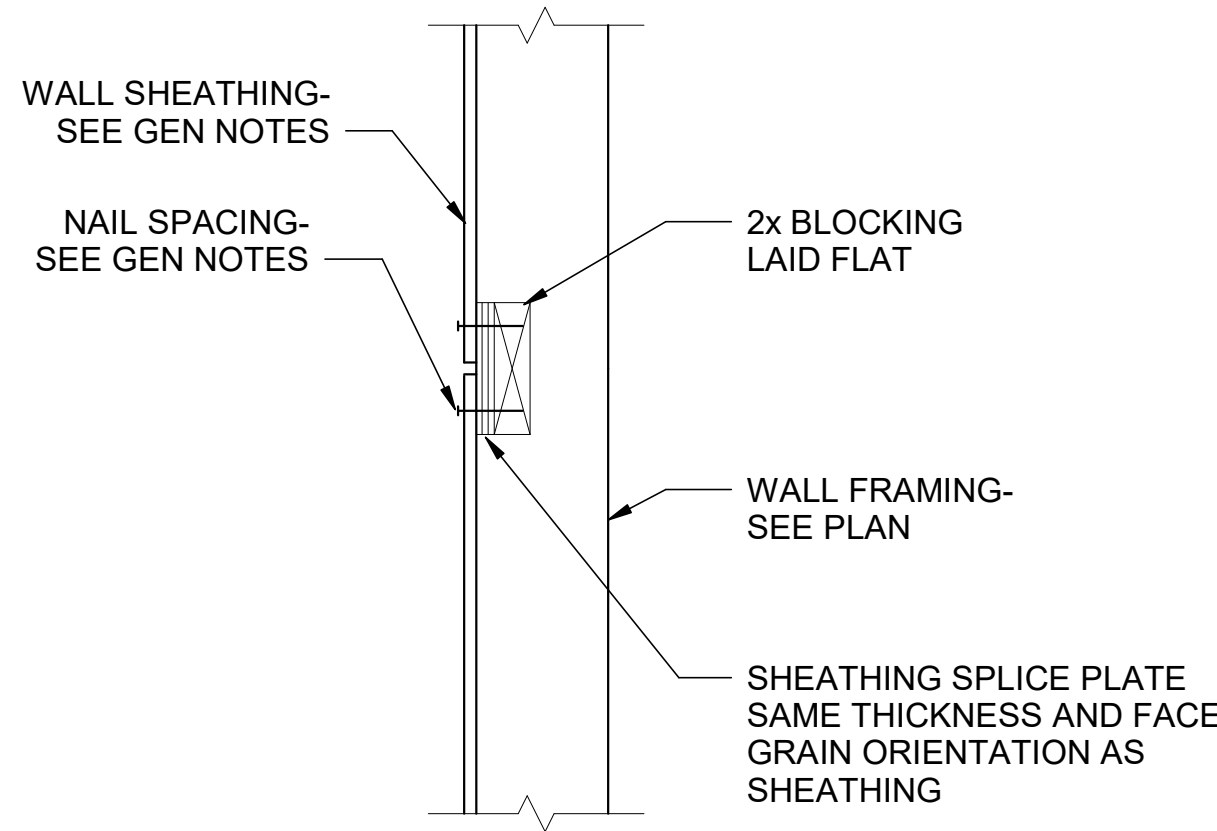


A Top Plate

NOTE:
SPLICE TOP PLATE W/ (10) 10d NAILS
EA SIDE OF SPLICE.

B Exterior Header

NOTE:
SPLICE TOP PLATE W/ (10) 10d NAILS
EA SIDE OF SPLICE.



C Splice Plate

Header Schedule				
Clear Opening	Header	Material	Stud Pack	Notes
≤8'-0"	(3) 2x12	SL	3 EA SIDE	

NOTES:
1. HEADERS FOR OPENINGS LARGER THAN 8'-0" ARE INDICATED ON PLAN.



PANDA EXPRESS, INC.
1683 Walnut Grove Ave.
Rosemead, California
91770
Telephone: 626.799.9898
Facsimile: 626.372.8288

All ideas, designs, arrangement and plans indicated or represented by this drawing are the property of Panda Express Inc. and were created for use on this specific project. None of these ideas, designs, arrangements or plans may be used by or disclosed to any person, firm, or corporation without the written permission of Panda Express Inc.

REVISIONS:

ISSUE DATE:

CHECK SET	04-20-2
BID/PERMIT SET	06-01-2

DRAWN BY:

LBYD

PANDA PROJECT #: D24956

PANDA STORE #:

ARCH PROJECT #: 239201

ARCHITECT LOGO



PANDA EXPRESS

PANDA HOME 2600
450 Kannapolis Parkway
Concord, NC 28027

TYPICAL DETAILS

S105