

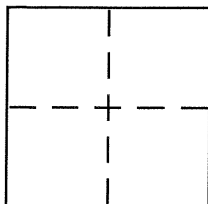
CORNER RECORD

Document Number CR 4360

City of UNION CITY

County of ALAMEDA, California

Brief Legal Description PARCEL "A" - PARCEL MAP 961-1/26/1973-Book 76 PAGE 96



CORNER TYPE

Government Corner ☐ Control ☐
 Meander ☐ Property ☒
 Rancho ☐ Other ☐
 Date of Survey Aug 2010

COORDINATES (Optional)

N. _____
 E. _____
 Zone _____ NAD27 ☐ NAD83 ☐
 NAD83 Epoch _____
 Elev. _____
 Vert. Datum: NGVD29 ☐ NAVD88 ☐
 Meas. Units: Metric ☐ Imperial ☐

Corner - Left as found ☐ Found and tagged ☐ Established ☒ Reestablished ☐ Rebuilt ☐

Identification and type of corner found: Evidence used to identify or procedure used to establish or reestablish the corner:

SHOWN ON SHEET 2 of 2

A description of the physical condition of the monument as found and as set or reset:

SHOWN ON SHEET 2 of 2

SURVEYOR'S STATEMENT

This Corner Record was prepared by me or under my direction in conformance with the Land Surveyor's Act on 11/18/10

Signed [Signature] P.L.S. or R.C.E. No. 6784

COUNTY SURVEYOR'S STATEMENT

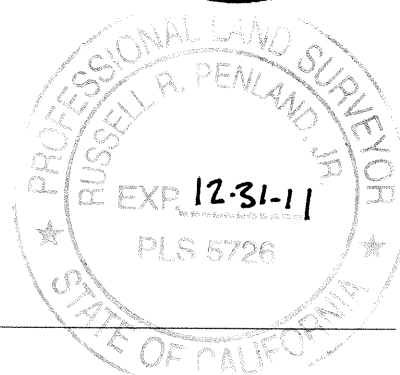
This Corner Record was received 12-01-2010

and examined and filed 12-22-2010

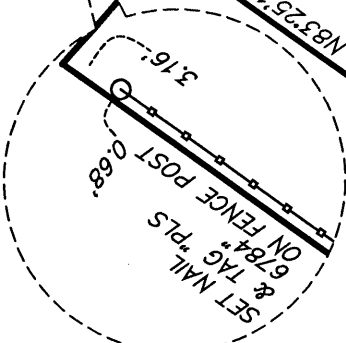
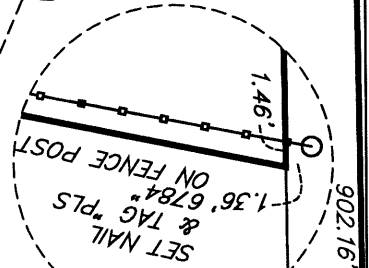
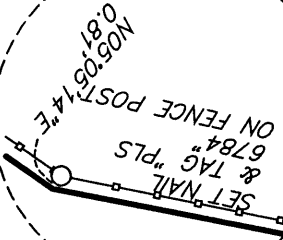
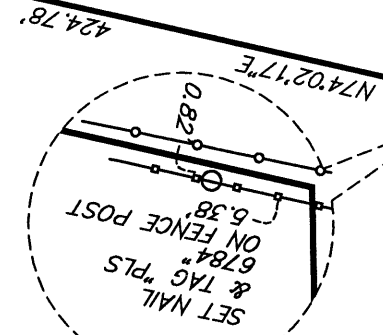
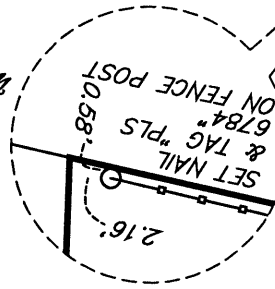
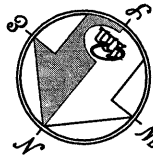
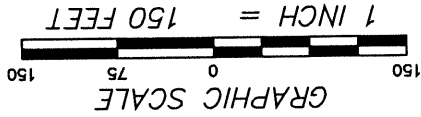
Signed [Signature] P.L.S. or R.C.E. No. 5726

Title COUNTY SURVEYOR

County Surveyor's Comment _____



GV46E7



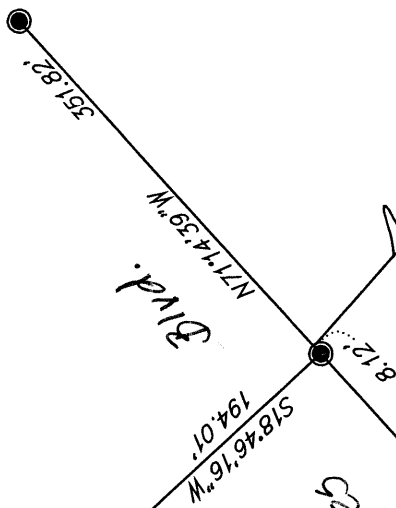
NOTE
 RECORD=MEASURED
 DETAILS 1"=10'

LEGEND

● Found standard City concrete well monument

*Almaden Blvd.
 (formerly Baker Rd.)*

PARCEL A
 76 PM 96



*Alvarado-Niles
 Almaden Blvd.*