

BK 39 Pg 33

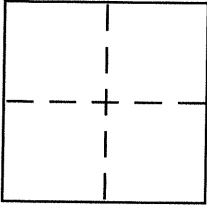
CORNER RECORD

Document Number CR 4407

City of OAKLAND

County of Alameda, California

Brief Legal Description PLOT A, LAKESHORE HIGHLANDS (14 M 37)



CORNER TYPE

Government Corner ☐ Control ☐
Meander ☐ Property ☒
Rancho ☐ Other ☐
Date of Survey JANUARY 4, 2011

COORDINATES (Optional)

N. _____
E. _____
Zone _____ NAD27 ☐ NAD83 ☐
NAD83 Epoch _____
Elev. _____
Vert. Datum: NGVD29 ☐ NAVD88 ☐
Meas. Units: Metric ☐ Imperial ☐

Corner – Left as found ☐ Found and tagged ☐ Established ☒ Reestablished ☐ Rebuilt ☐

Identification and type of corner found: Evidence used to identify or procedure used to establish or reestablish the corner:

FOUND 1/8" BRASS PIN IN MONUMENT WELL

A description of the physical condition of the monument as found and as set or reset:

SET 5/8" REBAR WITH PLASTIC CAP RCE 18650

SET 3/4" BRASS TAG RCE 18650

SURVEYOR'S STATEMENT

This Corner Record was prepared by me or under my direction in conformance with

the Land Surveyor's Act on JANUARY 10, 2011

Signed [Signature] P.L.S. or R.C.E. No. 18650



COUNTY SURVEYOR'S STATEMENT

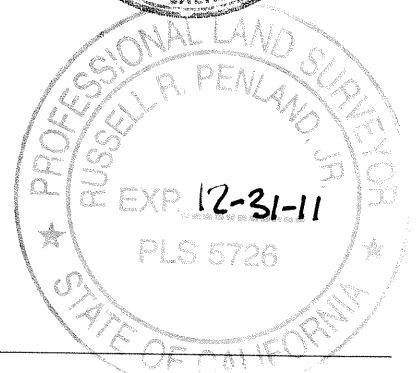
This Corner Record was received 1-12-2011

and examined and filed 2-27-2011

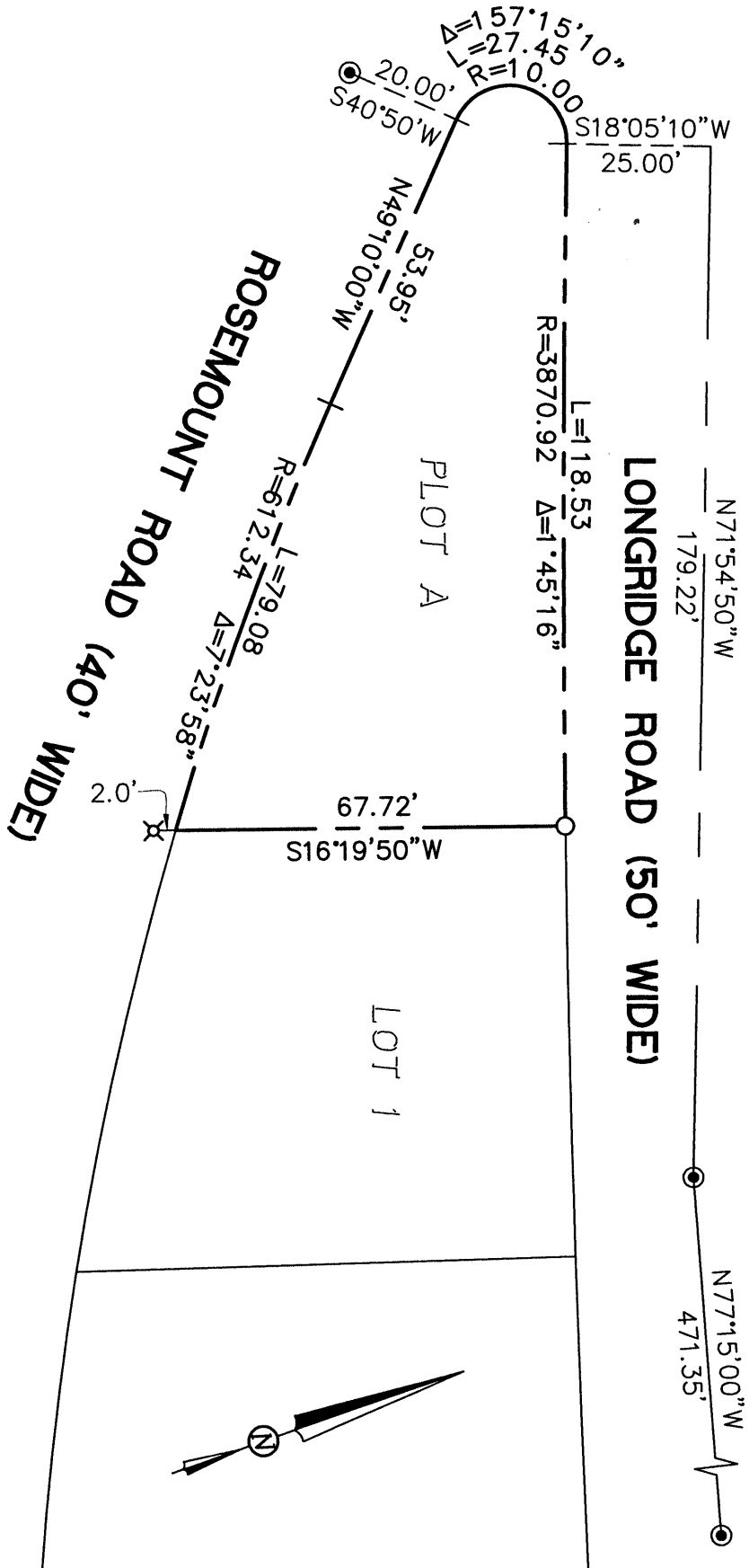
Signed [Signature] P.L.S. or R.C.E. No. 5726

Title COUNTY SURVEYOR

County Surveyor's Comment _____



CW92J5



LEGEND

- FOUND 1/8" BRASS PIN IN MONUMENT WELL
- SET 5/8" REBAR WITH PLASTIC CAP RCE 18650
- ⌵ SET 3/4" BRASS TAG RCE 18650 ON CONCRETE SIDEWALK

CORNER RECORD

PLOT A, "LAKE SHORE HIGHLANDS" (16 M 37)
CITY OF OAKLAND, COUNTY OF ALAMEDA, CALIFORNIA

ASSESSOR'S PARCEL 011-0884-020

JANUARY 2011

SCALE: 1" = 30'

MORAN ENGINEERING

BERKELEY, CALIFORNIA

F.B. 1321 LONGRIDGE-TOP-2010.DWG JOB NO. 08-7105.1