

SURVEYOR'S CERTIFICATE

This map correctly represents a survey made by me or under my direction in conformance with the requirements of Chapter 15 of Division 3 of the Business and Professions Code at the request of M. T. Freitas in August 1958.

Sheldon Smith
R.C.E. No. 10402

COUNTY SURVEYOR'S CERTIFICATE

This map has been examined for conformance with the requirements of Chapter 15 of Division 3 of the Business and Professions Code this 22th day of Sept. 1958.

JAMES B. ENOCHS
Acting County Surveyor

By Deputy

Sheldon Smith

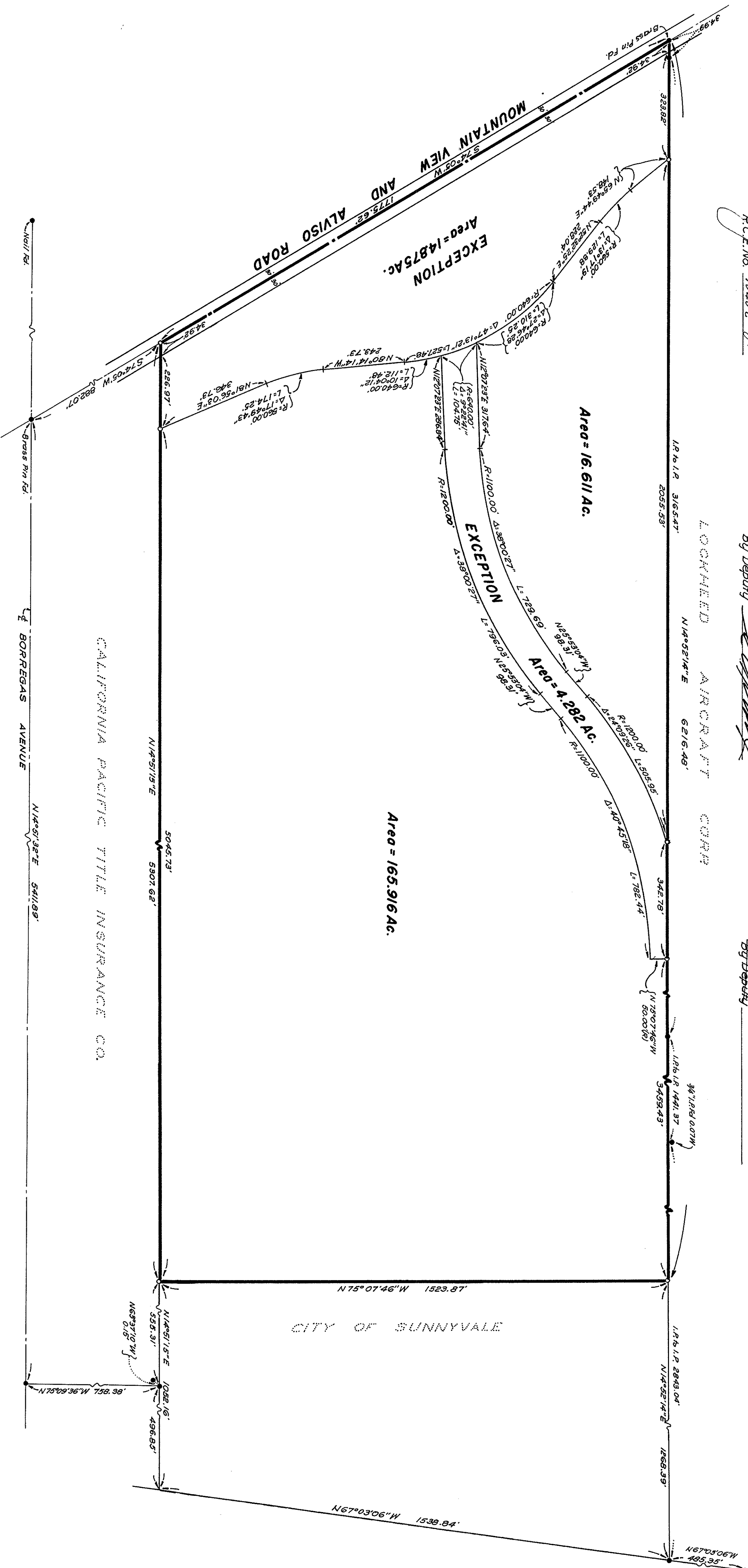
COUNTY RECORDER'S CERTIFICATE

Filed for record this 17 day of Sept. 1958, at 1:16 P.M. in Book 97 of Maps, at page 20, at the request of Leo W. Ruth. *Leo W. Ruth*
Syl C. Tully
County Recorder.

By Deputy

BASIS OF BEARINGS

The bearing S 74° 05' W, of the centerline of Mountain View-Alviso Road, as shown on that certain "Record of Survey," recorded in Book 78 of Maps, at Page 38, Santa Clara County Official Records, was taken as the basis of all bearings shown on this map.



LEGEND
— Iron Pipe Found, unless otherwise indicated.
— Iron Pipe Set.
NOTE
All dimensions shown hereon are in feet and decimals thereof.

RECORD OF SURVEY

BEING A PORTION OF LOT 4-A, OF RANCHO PASTORIA DE LAS BORREGAS,
SANTA CLARA COUNTY
CALIFORNIA

FOR
M. T. FREITAS

RUTH AND GOING
SAN JOSE
SCALE: 1"=200'
CIVIL ENGINEERS
CALIFORNIA
AUGUST, 1958

Job No. 11,445