

REVISED

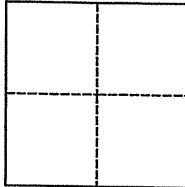
# CORNER RECORD

Agency Index **BK 102 PG 31**  
Document Number **CR 10635**

City of CASTRO VALLEY County of ALAMEDA, California  
Brief Legal Description TY91K3 (FAIRMONT DRIVE EAST OF FOOTHILL BLVD)

## CORNER TYPE

## COORDINATES (Optional)



Government Corner ☒ Control ☐  
Meander ☐ Property ☐  
Rancho ☐ Other ☐

N. \_\_\_\_\_ E. \_\_\_\_\_

Elevation \_\_\_\_\_

Units Metric ☐ U.S. Survey Foot ☒

Horizontal Datum \_\_\_\_\_

Zone \_\_\_\_\_ Epoch Date \_\_\_\_\_

Vertical Datum \_\_\_\_\_

☐ Complies with Public Resources Code §§8801-8819

☐ Complies with Public Resources Code §§8890-8902

Date of Survey 07/24/2017

PLS Act Ref.: ☒ 8765(d) ☐ 8771 ☐ 8773 ☐ Other:

Corner/  
Monument: ☐ Left as found ☐ Established ☐ Rebuilt ☒ Pre-Construction  
☐ Found and tagged ☐ Reestablished ☐ Referenced ☐ Post-Construction

Narrative of corner identified and monument as found, set, reset, replaced, or removed:

☐ See sheet #2 for description(s):

*FOUND COUNTY BRASS CAP MON IN MON WELL, DOWN 12",  
SET FOUR MAG NAILS AND TIES TO AF78U3 AS SHOWN ON SHEET 2.*

## SURVEYOR'S STATEMENT

This Corner Record was prepared by me or under my direction in conformance with

the Professional Land Surveyors' Act on JULY 30, 2017

Signed *James N. Landrum* P.L.S. or R.C.E. No. LS 5837



## COUNTY SURVEYOR'S STATEMENT

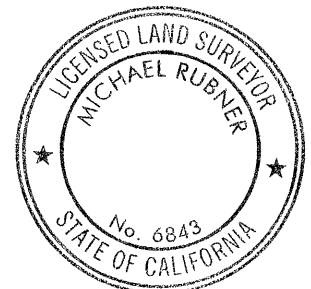
This Corner Record was received September 20, 2017

and examined and filed 16 MARCH 2018

Signed *Michael Rubner* P.L.S. or R.C.E. No. 6843

Title COUNTY SURVEYOR

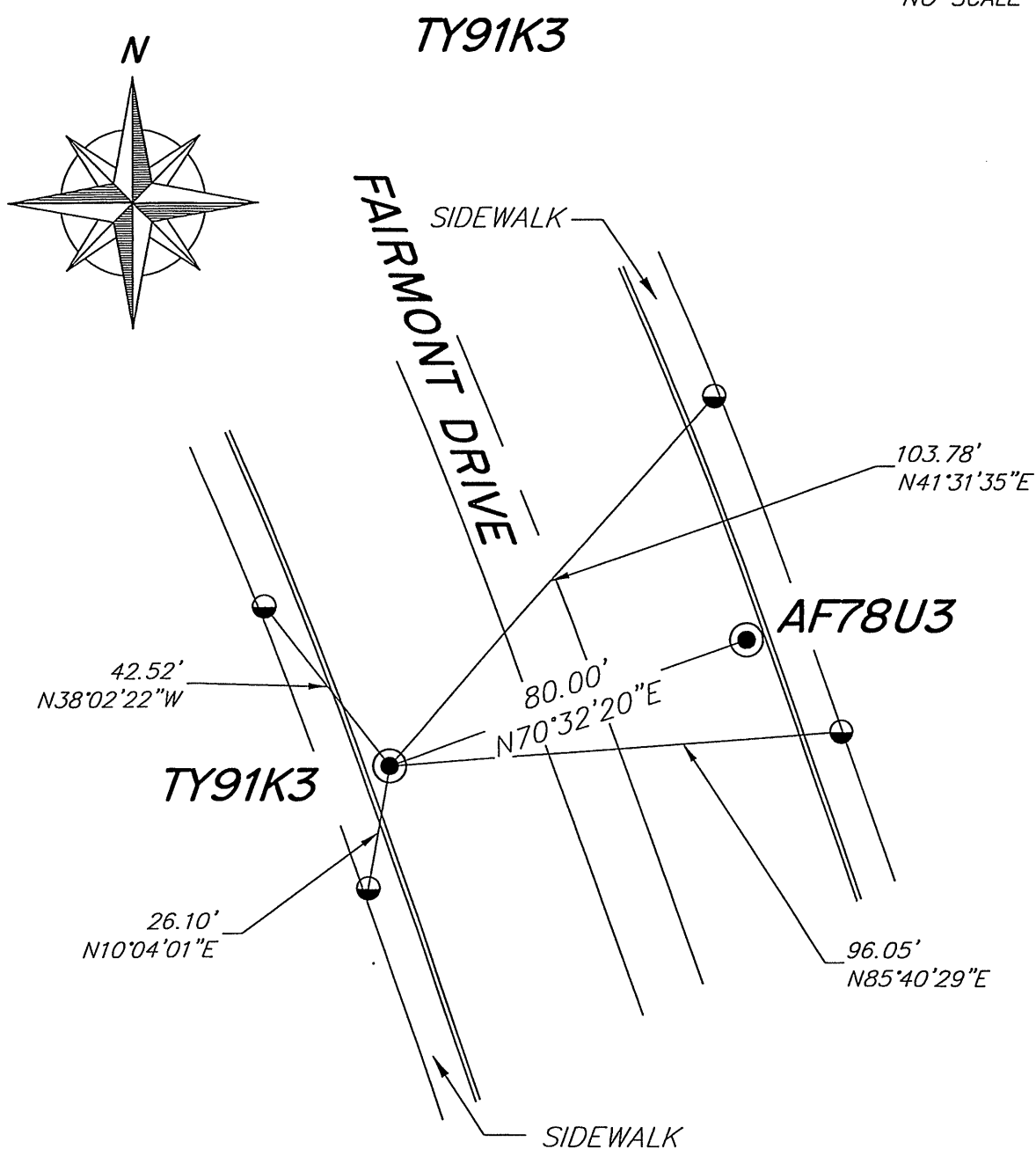
County Surveyor's Comment



REVISED (26/02/2018)

SPEC 2279

NO SCALE



## LEGEND

● FOUND ACBCM IN MON WELL

SET MAG NAIL UNLESS  
OTHERWISE SHOWN

ACBCM. ALAMEDA COUNTY  
BRASS CAP MONUMENT

NOTE THAT BEARINGS ARE  
APPROXIMATE AND ARE TO  
BE USED FOR ANGLE  
CALCULATIONS ONLY.