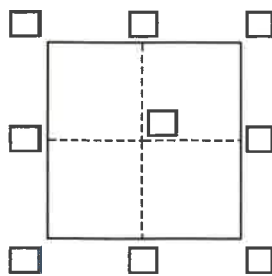


# CORNER RECORD

Agency Index BK 152 PG 35  
Document Number CR 16449

City of BERKELEY County of ALAMEDA, California  
Brief Legal Description SET BRASS DISC IN MONUMENT WELL LOCATED AT INTERSECTIONS OF MARINA BLVD AND UNIVERSITY AVE. CITY OF BERKELEY MONUMENT B2558



## CORNER TYPE

Government Corner ☐ Control ☒  
Meander ☐ Property ☐  
Rancho ☐ Other ☐

Date of Survey DECEMBER 6, 2022

## COORDINATES (Optional)

N.                      E.                     

Elevation                     

Units Metric ☐ U.S. Survey Foot ☒

Horizontal Datum                     

Zone                      Epoch Date                     

Vertical Datum                     

☐ Complies with Public Resources Code §§8801-8819

☐ Complies with Public Resources Code §§8890-8902

PLS Act Ref.: ☐ 8765(d) ☒ 8771 ☐ 8773 ☐ Other:

Corner/  
Monument: ☐ Left as found ☐ Established ☒ Rebuilt ☐ Pre-Construction  
☐ Found and tagged ☐ Reestablished ☐ Referenced ☒ Post-Construction

Narrative of corner identified and monument as found, set, reset, replaced, or removed:

☐ See sheet #2 for description(s):

SET BRASS DISC IN MONUMENT WELL

FOUND REFERENCE POINTS AS SHOWN ON PAGE 2 PER CORNER RECORD 15596

## SURVEYOR'S STATEMENT

This Corner Record was prepared by me or under my direction in conformance with

the Professional Land Surveyors' Act on 3/28/23

Signed *Laura J. Cabral* P.L.S. or R.C.E. No. P.L.S. 7756



## COUNTY SURVEYOR'S STATEMENT

This Corner Record was received                     

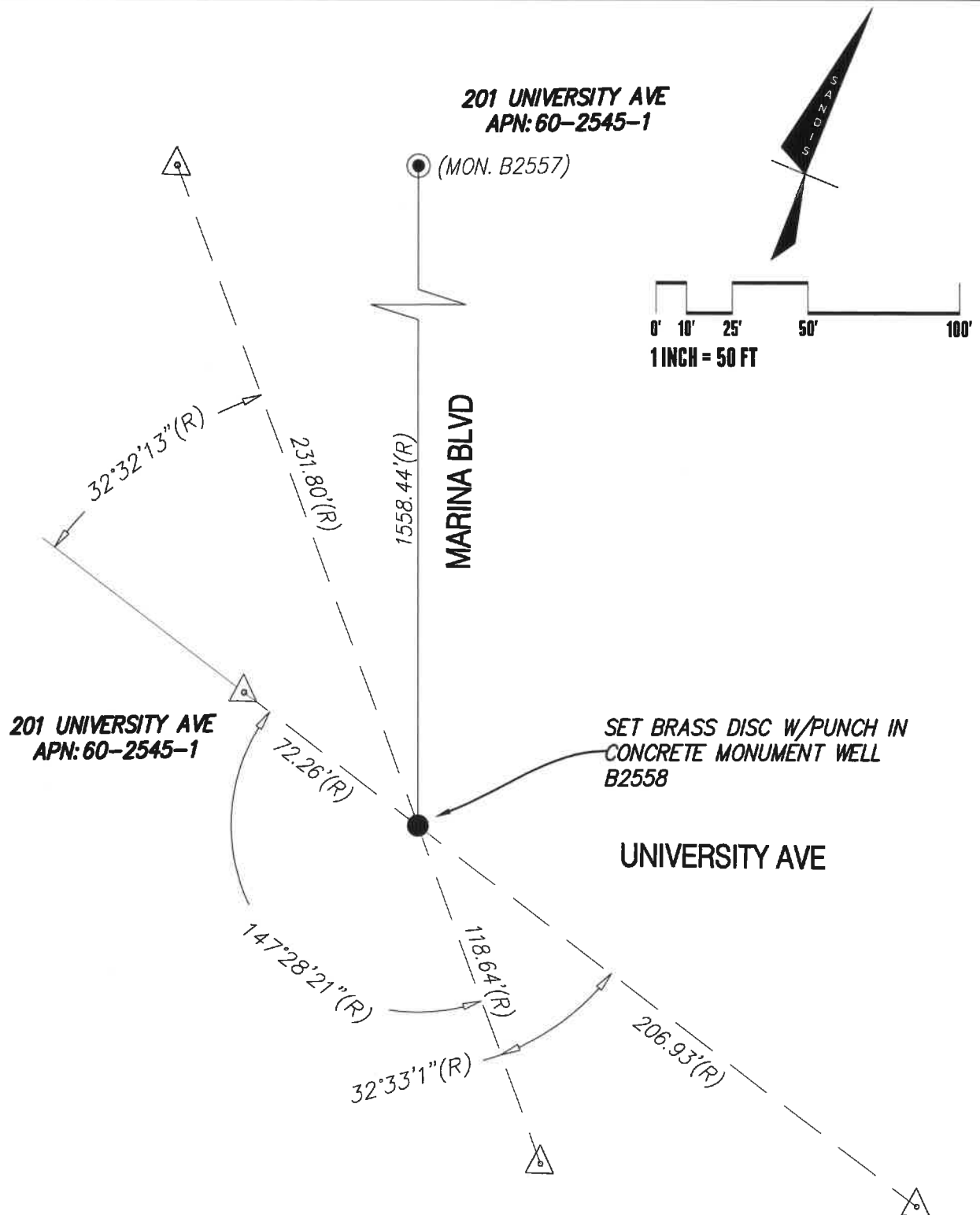
and examined and filed APR 03 2023

Signed *D. Ian Wilson* P.L.S. or R.C.E. No. 7010

Title ALAMEDA COUNTY SURVEYOR

County Surveyor's Comment





## LEGEND



FOUND NAIL/TAG IN AC (REFERENCE POINT) PER CR 15596



SET BRASS DISC IN MONUMENT WELL



FOUND CITY OF BERKELEY MONUMENT PER CR 15596

XXX.XX'(R)

RECORD DATA HELD PER CR 15596

**CORNER RECORD**  
CITY OF BERKELEY, ALAMEDA COUNTY, CALIFORNIA



**SANDIS**

**BUILD ON.**  
SANDIS.NET