

TRACT NO 37-3

ASPEN SPRINGS RANCH

IN THE COUNTY OF MONO, CALIFORNIA.

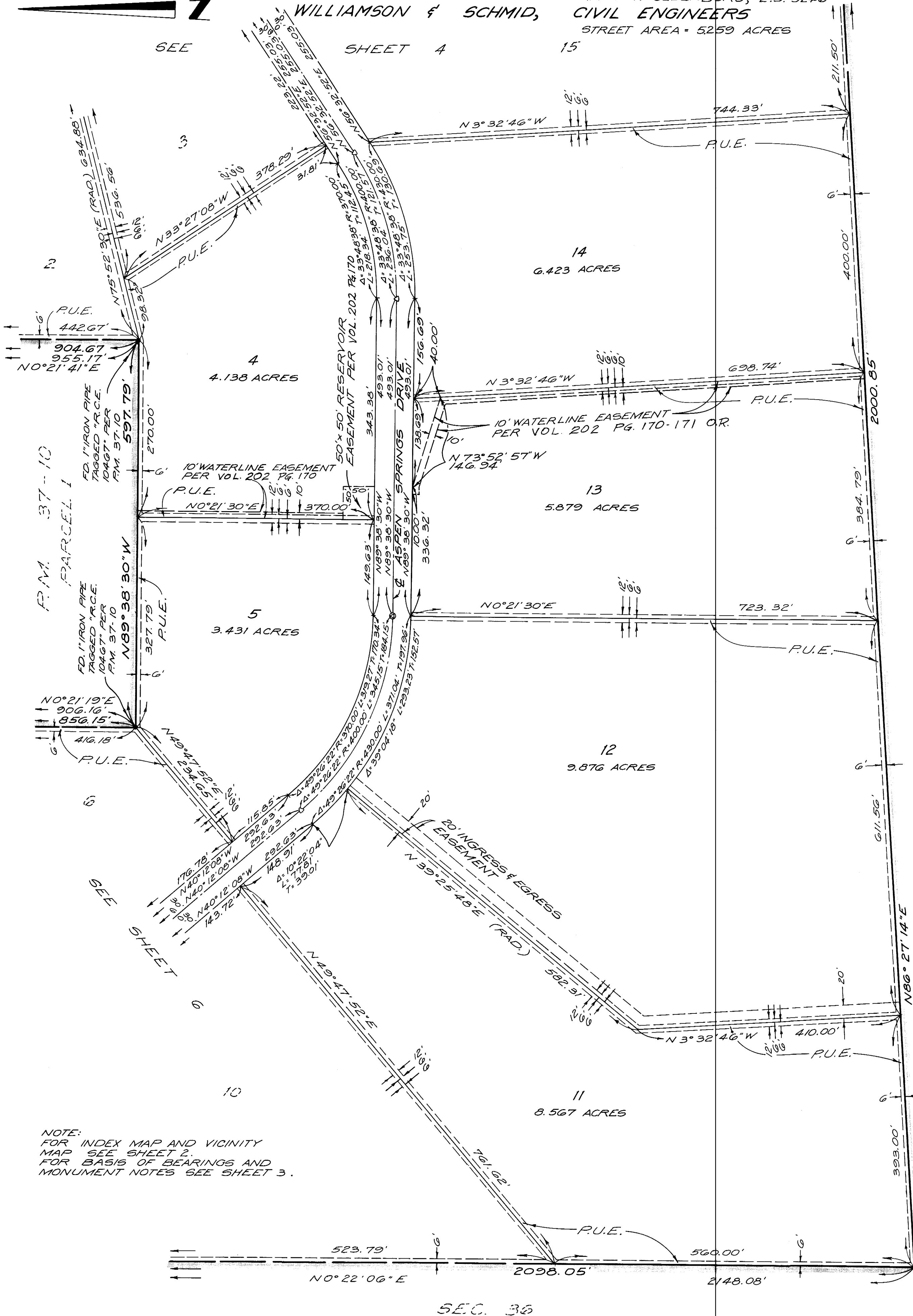
21 LOTS
MARCH 1975

130.809 ACRES
GERALD F. OLDENBURG, L.S. 3246
WILLIAMSON & SCHMID, CIVIL ENGINEERS
STREET AREA = 5259 ACRES

SEE

SHEET 4

15



FD, U.S. G.L.O. MON.
WITH BRASS CAP
MKD.

Subdiv. Map. Vol. 8, pg. 48-D