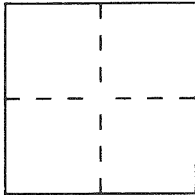


**CORNER RECORD**Document Number 435  
City of CASTRO VALLEY County of ALAMEDA, CaliforniaBrief Legal Description LOT 520. RECORDED IN BK. 8. OF MAPS. PG. 76-77**CORNER TYPE****COORDINATES  
(Optional)**

Government Corner ☐ Control ☐  
 Meander ☐ Property ☒  
 Rancho ☐ Other ☐  
 Date of Survey \_\_\_\_\_

N. \_\_\_\_\_  
 E. \_\_\_\_\_  
 Zone \_\_\_\_\_ Datum \_\_\_\_\_  
 Elev. \_\_\_\_\_

Corner — Left as found ☐ Found and tagged ☐ Established ☐ Reestablished ☐ Rebuilt ☐

Identification and type of corner found: Evidence used to identify or procedure used to establish or reestablish the corner:

FOUND EVIDENCE ARE PIN IN CONCRETE IN MONUMENT BOX.  
CORNERS SET ARE PROPERTY CORNERS, REESTABLISHED FROM  
FOUND EVIDENCE AS SHOWN ON DRAWING.

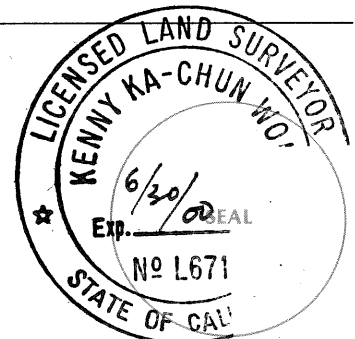
A description of the physical condition of the monument as found and as set or reset:

FOUND MONUMENTS ON STREET ARE PIN ON CONCRETE, NO TAG, PER  
BK. 8 M. PG. 76-77. SET MONUMENTS ARE 3/4" IP, TAG LS 6713.

**SURVEYOR'S STATEMENT**

This Corner Record was prepared by me or under my direction in conformance with  
 the Land Surveyors' Act on SEPT. 15, 1994

Signed [Signature] L.S. or R.C.E. Number LS 6713

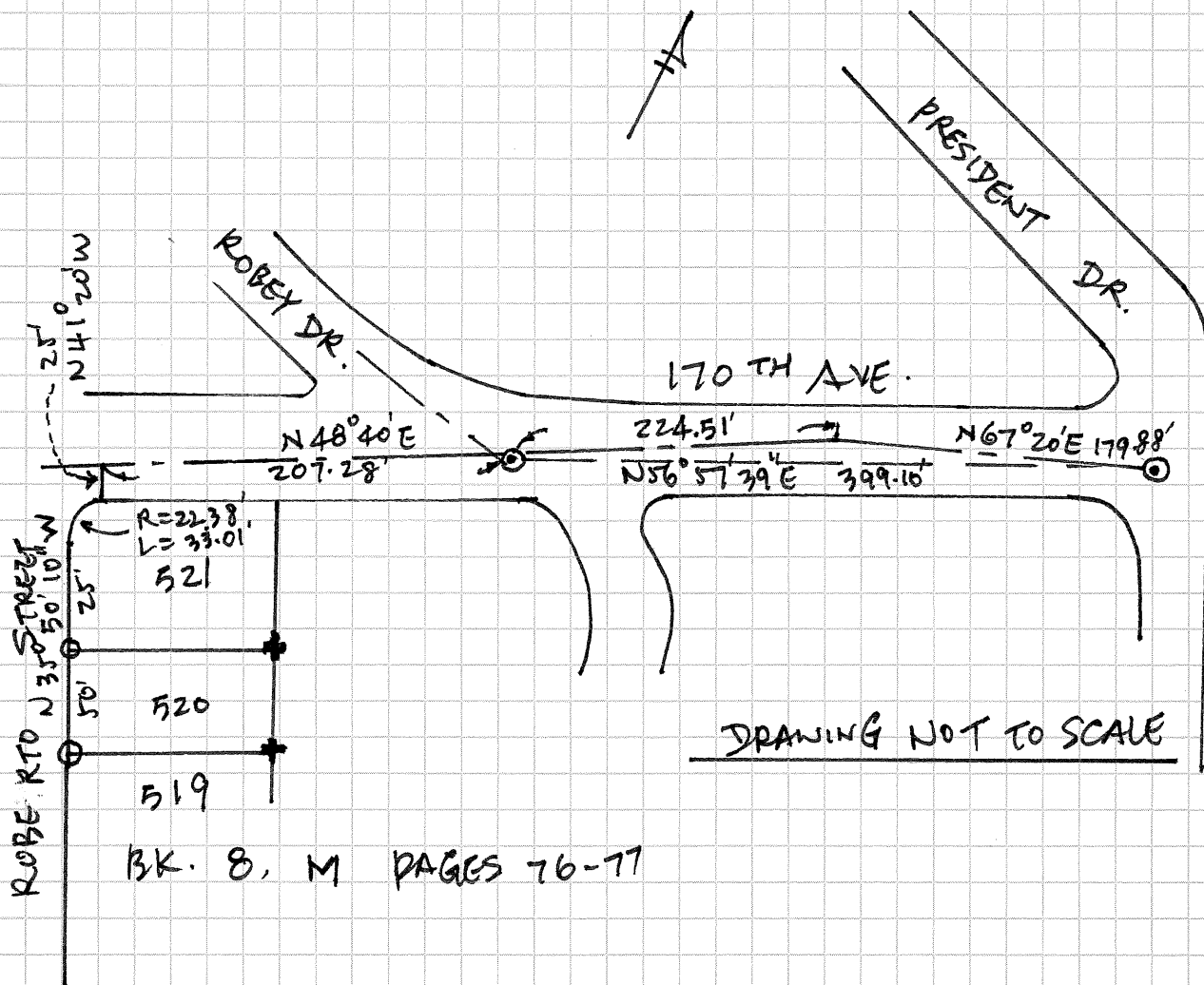
**COUNTY SURVEYOR'S STATEMENT**

This Corner Record was received 09-02 1994 and examined  
 and filed 12-02 1999

Signed [Signature] Title DEPUTY COUNTY SURVEYOR



County Surveyor's Comment \_\_\_\_\_



BK. 8, M PAGES 76-77

### BASIS OF BEARING:

THE BEARING BETWEEN THE TWO FOUND MONUMENTS ON 170 TH AVE. CALCULATED TO BE  $N56^{\circ}57'39"E$  IS THE BASIS OF BEARING OF THIS SURVEY.

### LEGEND:

- ⊙ FD. PIN ON CONCRETE IN MONUMENT BOX PER BK. 8. M PG. 76-77
- SET  $\frac{3}{4}"$  IP, TAG LS6713.
- ✱ SET NAIL & SHINER, TAG LS6713