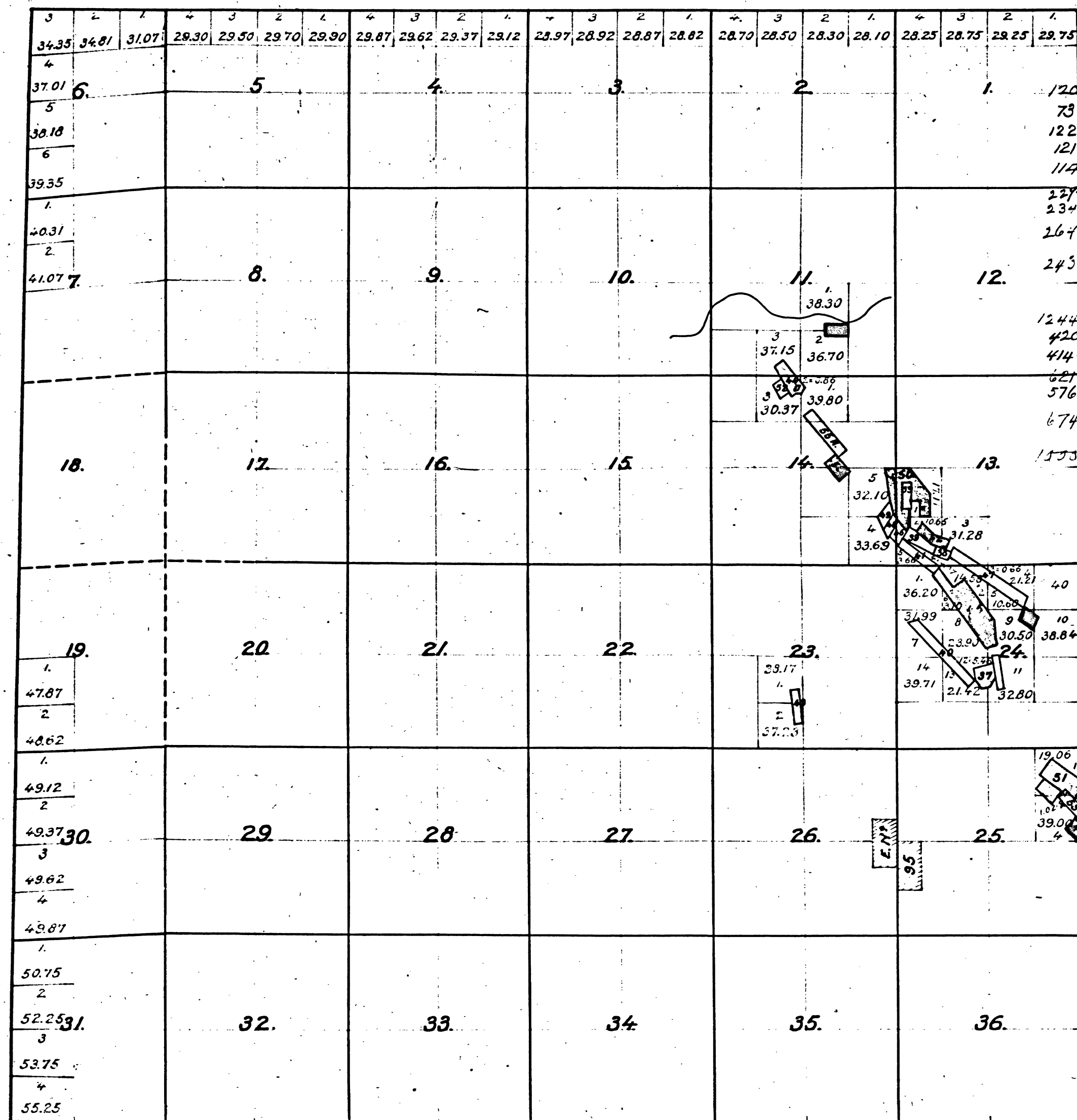


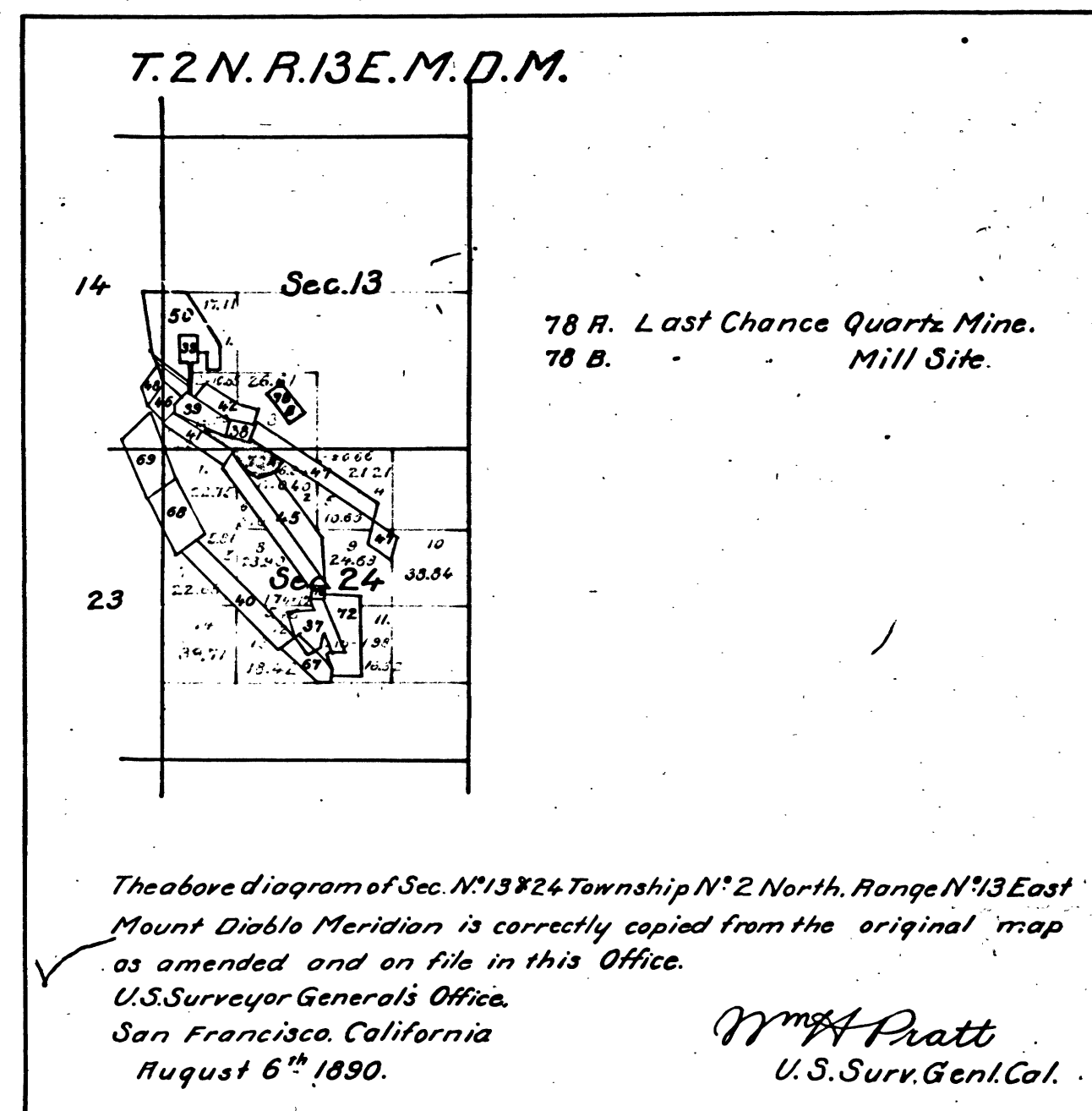
Township N°2 North, Range N°13 East, Mount Diablo Meridian.

A. G.

≠ Mineral Land returned Feb. 18 '71.



Entry	Lot	Description	Pat.	Date	N°
120	16	Stanislaus Gold Quartz Mine & Mill Site	Pat. Sept. 1 '73		N° 601.
73	14	Enterprise Quartz Claim.	Sept. 1 '73		600
122	15	Reserve Quartz Mine & Mill Site	Sept. 1 '73		604
121	17	Santa Cruz Quartz Claim	Sept. 1 '73		602
119	19	Melones or Point Rock Quartz Mine.	Jan. 6 '73		500
227	26	Finnegan Quartz Claim	Feb. 13 '74		775
234	25	Carson Creek Quartz Mine	Jan. 24 '74		743
164	53	44A. Chaparral Hill & 44B. Mill Site	Dec. 31 '74		1146
245	52	Mineral Mountain Quartz Mine & Mill Site	Dec. 31 '74		1144
56	46	Morgan G. & S.	Mch. 9 '74		791
47	47	Carson Quartz Mine & Mill Site.	Mch. 9 '74		792
1244	98	Union	S. 6 L. Jan. 16 '80		
420	99	Kentucky	Pat. June 15 '76	N°	1821.
414	100	Irvine & M ^{rs} Millan Placer Mine	Apr. 12 '76		1746
627	134	Bawn Quartz Mine & Mill Site	Sept. 28 '78		2991.
576	131	Mc Creight & Reed Quartz Mine	Feb. 9 '78		2712
674	194	53 Gillis and Carrington Mill Site	Aug. 20 '79		3344
1553	229	55 B. Vanderbilt Q. M. and M. S.	Nov. 17 '81		5109
		E. N° 95. L. S. Pat. Jan. 27 '77			N° 2112
		Ret'd in Sec 11 & 14 S. G. L. Jan. 16 '80.			



The above Diagram of Township N°2 North, Range N°13 East, Mount Diablo Meridian correctly shows the amendments made in accordance with the Plats of Mining Surveys approved to date.

U.S. Surveyor General's Office
San Francisco, California
May 25th 1876

H. G. Rollins
U.S. Surv. Genl. Cal.

DEPARTMENT OF THE INTERIOR,
GENERAL LAND OFFICE,
Washington, D. C. Feb. 5th 1908.
I hereby certify that this is a true copy of the plat of official survey of the lands to which it relates, on file in this office.

H. W. Ford
Recorder, General Land Office.

41 130

T 2 N R 13 E M D

BLM 45

