

PARCEL MAP 9266 MAP Bk 294 pg 75

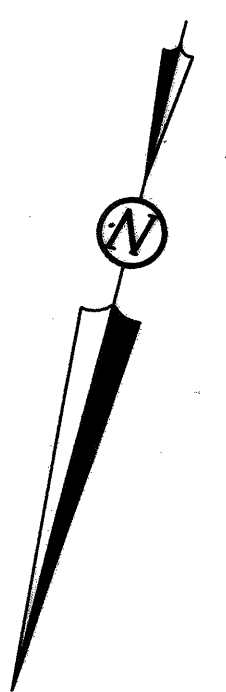
PARCEL MAP 9266
A ONE LOT SUBDIVISION FOR TWO CONDOMINIUM UNITS

BEING LOTS 10 AND 11 OF BLOCK 2
SAN PABLO AVENUE VILLA TRACT-REVISED MAP (8 M 74)
LOCATED AT 1150 55TH STREET
CITY OF OAKLAND COUNTY OF ALAMEDA, CALIFORNIA
NOVEMBER, 2006
SCALE: 1" = 10'

MORAN ENGINEERING, INC.

CIVIL ENGINEERS \ LAND SURVEYORS
1930 SHATTUCK AVENUE, SUITE A
BERKELEY, CALIFORNIA 94704
(510) 848-1930

- LEGEND**
- FOUND CITY PIN MONUMENT
 - PARCEL MAP BOUNDARY
 - RIGHT OF WAY
 - ORIGINAL LOT LINES
 - MONUMENT LINES
 - - - MONUMENT THE LINES

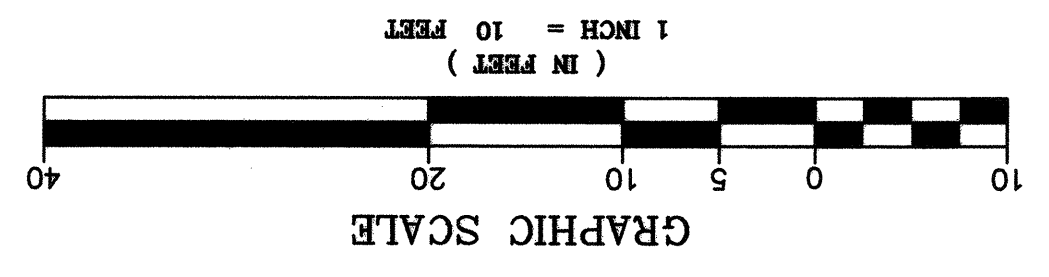
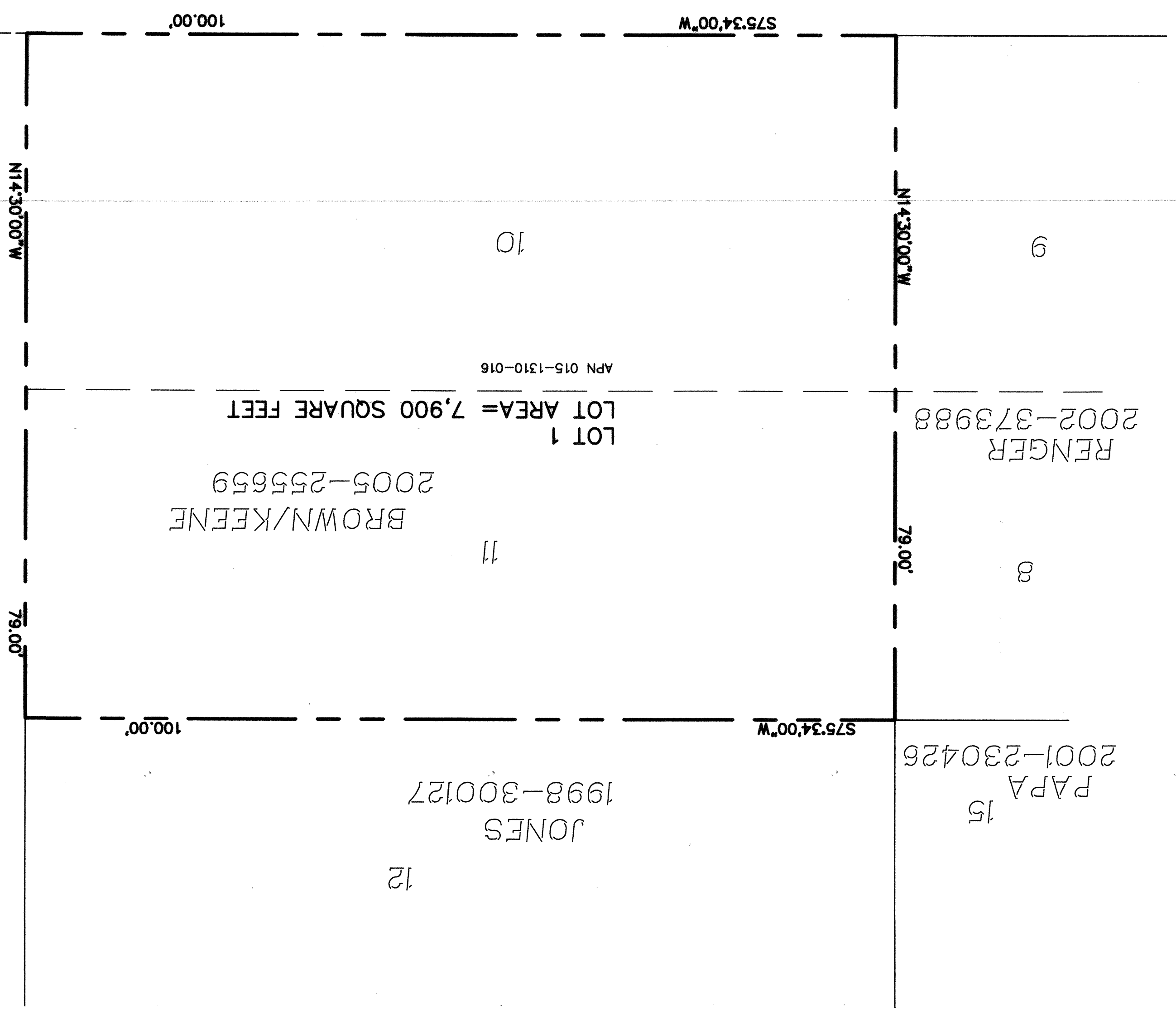


MONUMENT AT 56 TH STREET
148.40' (FIELD)
SAN PABLO AVENUE (100' WIDE)
25.00'
S14°27'40"E
MONUMENT AT 55 TH STREET

BASIS OF BEARINGS:
THE BEARING OF S 14°27'40" E BETWEEN THE MONUMENTS FOUND IN SAN PABLO AVENUE AT 55TH STREET AND 56TH STREET WAS TAKEN AS THE BASIS OF BEARINGS FOR THIS SURVEY.

SURVEYOR'S NOTE:
NO CITY SURVEY MONUMENTS OR RELIABLE REFERENCE POINTS WERE FOUND IN THE VICINITY OF THIS PROPERTY.
A "CURB SPLIT" ANALYSIS WAS USED IN THE POSITIONING OF THE BOUNDARY LINES AND IN THE ANGULAR RELATIONSHIPS BETWEEN STREETS.

MARSHALL STREET (60' WIDE)



OWNERS
IVOR S. BROWN AND ALISON R. KEENE
1150 55TH STREET, STUDIO B
OAKLAND, CALIFORNIA, 94608
(510) 652-2184