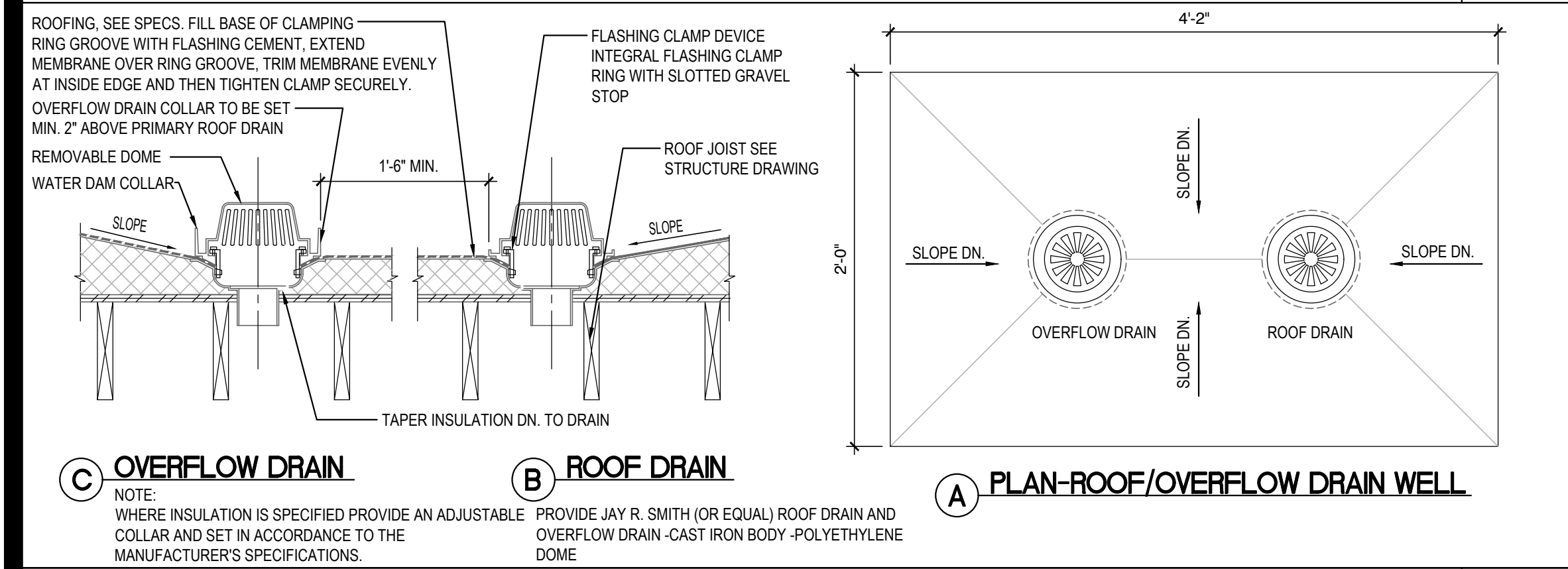
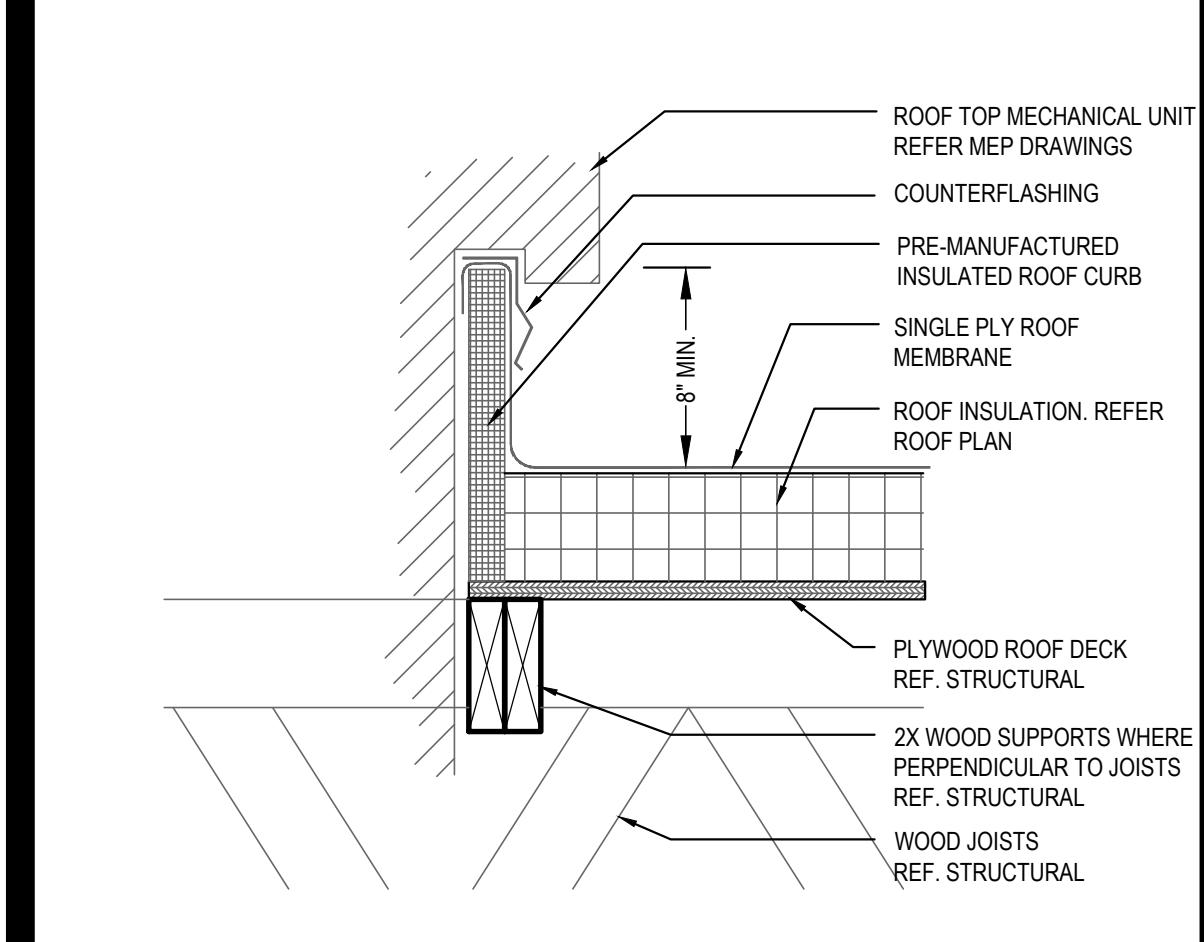


ROOF ACCESS LADDER DETAIL 16  
Scale= 1/4" = 1'-0" A-107



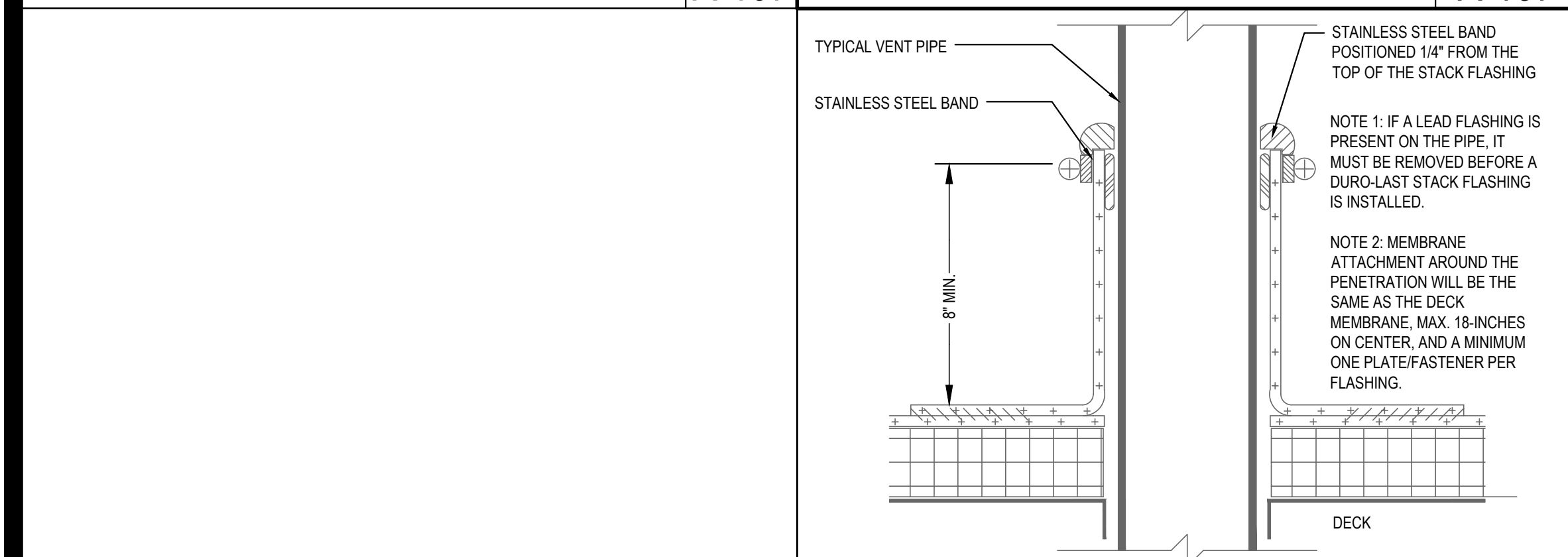
ROOF DRAIN DETAIL 15  
Scale= NTS A-107



MECHANICAL CURB DETAIL 18  
Scale= NTS A-107



NOT USED 14  
Scale= 3" = 1'-0" A-107



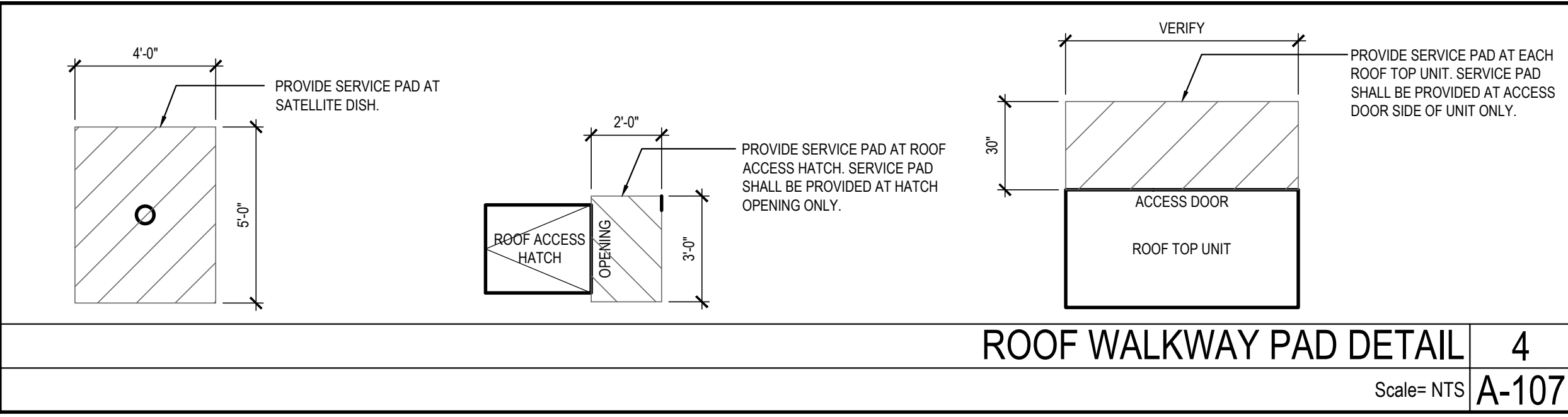
PLUMBING VENT DETAIL 13  
Scale= NTS A-107

ROOF PLAN NOTES:

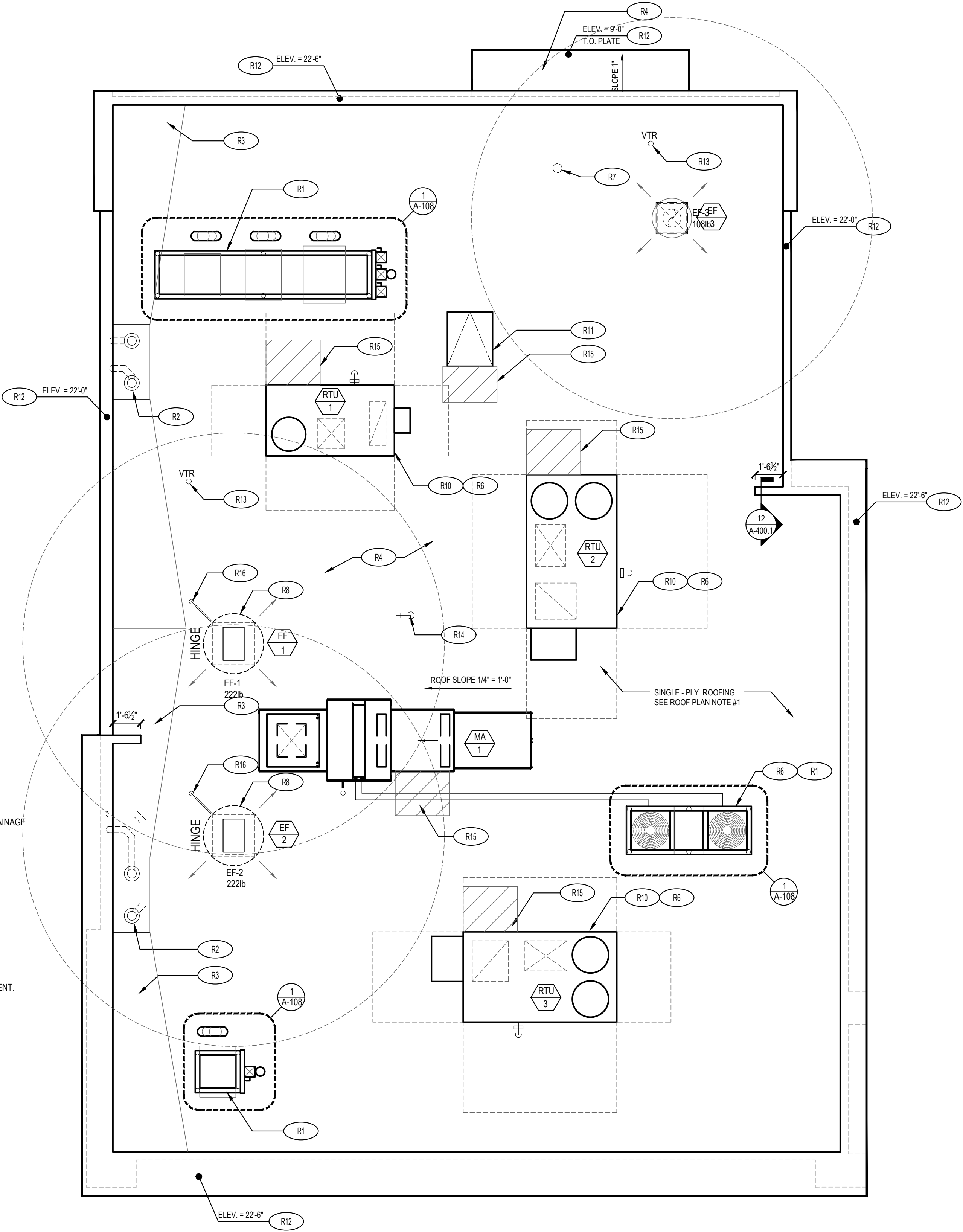
- WHITE, SINGLE-PLY, PVC 40MIL MECHANICALLY FASTENED ROOF MEMBRANE, AS MANUFACTURED BY DURO-LAST ROOFING, INC. NO ALTERNATES WILL BE ACCEPTED. PROVIDE STANDARD 15 YEAR WARRANTY.
- +6" INDICATES APPROXIMATE ELEVATION OF THE TOP OF ROOF PLYWOOD SHEATHING AT PLYWOOD CRICKET. SEE TRUSS DRAWINGS FOR ACTUAL ROOF SLOPE. ALL ROOF ELEVATIONS ARE GIVEN FROM TOP OF INTERIOR CONCRETE FLOOR SLAB (U.O.N.). WHEN FLOOR SLAB STEPS, ELEVATIONS ARE REFERENCED FROM THE HIGHEST FINISHED FLOOR.
- ANY PROJECTION THROUGH ROOF SHALL BE DETAILED PER THE SINGLE PLY ROOFING MANUFACTURER'S RECOMMENDED DETAILS.
- ALL EXHAUST FANS AND AIR CONDITIONING EQUIPMENT DESIGNATIONS ARE TAKEN FROM MECHANICAL DRAWINGS.
- NOT USED.
- CONTRACTOR SHALL CONFIRM THAT ALL AREAS OF ROOF ARE PROVIDED WITH POSITIVE DRAINAGE.
- ALL ROOF PENETRATIONS FOR PLUMBING VENTS, POWER CONDUITS, ETC. SHALL BE FLASHED PER BUILDING SPECIFICATIONS AND DETAILS. VENTS SHALL BE AT LEAST 10'-0" HORIZONTAL OR 3'-0" ABOVE OUTSIDE AIR INTAKES (A/C UNITS, MAKE-UP AIR).
- CONTRACTOR BE RESPONSIBLE FOR COORDINATION OF SIZES AND LOCATIONS OF ROOF OPENINGS (VENTS, DUCTS, ETC.), PLATFORMS, BASES ETC. COORDINATE SIZES OF MECHANICAL EQUIPMENT PLATFORMS, BASES, ROOF EQUIPMENT PLATFORMS AND OPENINGS SHOWN ON DRAWINGS WITH EQUIPMENT BEING SUPPLIED. SEE TYPICAL DETAILS ON THIS SHEET ALSO COORDINATE INSTALLATION OF LIGHTING, POWER, CONVENIENCE OUTLETS ETC.
- FOR ALL STRUCTURAL FRAMING MEMBERS, SIZES, AND ADDITIONAL INFORMATION, SEE STRUCTURAL DRAWINGS.
- PROVIDE ROOF CRICKET AT MECHANICAL EQUIPMENT TO ASSURE POSITIVE ROOF DRAIN.
- ALL ROOF EQUIPMENT TO BE SCREENED FROM PUBLIC VIEW.
- ROOFTOP EQUIPMENT TO BE LOCATED AT LEAST 42" MINIMUM FROM TOWERS FOR SERVICING
- PROVIDE SERVICE PAD AT EACH UNIT ONLY AT SERVICE ACCESS DOOR
- ALL GAS PIPING ON ROOF TO BE PAINTED SAFETY YELLOW

ROOF PLAN KEYNOTES:

- R1 REF: EQUIPMENT RACK (SEE SHEET A-108)
- R2 4" ROOF DRAIN AND OVERFLOW DRAIN (15 A-107)
- R3 TAPERED ROOF INSULATION CRICKET TO ASSURE POSITIVE ROOF DRAINAGE
- R4 SINGLE - PLY ROOFING SEE ROOF PLAN NOTE #1
- R5 GALV RIGID METAL CONDUIT & WEATHERHEAD AND PULL STRING FOR SATELLITE CABLE. EXACT LOCATION ON ROOF TO BE COORDINATED WITH PANDA PROJECT MANAGER AND SERVICE PROVIDER. REFER TO E-104/A-108 FOR SIZE AND INSTALLATION.
- R6 ROOF TOP MECHANICAL UNIT SEE MECHANICAL DRAWING
- R7 WATER HEATER VENT - SEE MEP PLANS. OFFSET VENTS AS REQUIRED TO MAINTAIN MIN. 10'-0" AWAY FROM AIR INTAKE SYSTEMS ON EQUIPMENT.
- R8 EXHAUST FAN
- R10 MECHANICAL UNIT CURB. SEE DETAIL 18/A-107
- R11 ROOF ACCESS HATCH LOCATE BETWEEN 2 ADJACENT TRUSSES (16 A-107)
- R12 TOP OF PLATE - REF. STRUCTURAL
- R13 PLUMBING VENT (13 A-107)
- R14 WEATHER PROOF HYDRANT
- R15 PROVIDE WALK-WAY PAD AS SHOWN. REFERENCE DETAIL 4/A-107
- R16 POWER SUPPLY LOCATION FOR ROOFTOP EXHAUST FANS FOR KITCHEN HOOD



ROOF WALKWAY PAD DETAIL 4  
Scale= NTS A-107



ROOF PLAN 1  
Scale= 1/4" = 1'-0" A-107



PANDA RESTAURANT GROUP INC.  
1683 Walnut Grove Ave.  
Rosemead, California  
91770  
Telephone: 626.799.9898  
Facsimile: 626.372.8288

All ideas, designs, arrangement and plans indicated or represented by this drawing are the property of Panda Express Inc. and were created for use on this specific project. None of these ideas, designs, arrangements or plans may be used by or disclosed to any person, firm, or corporation without the written permission of Panda Express Inc.

REVISIONS:

1	04.29.2021	ISSUE FOR PERMIT
2	06.04.2021	ISSUE FOR BID

ISSUE DATE:

1	04.29.2021	ISSUE FOR PERMIT
2	06.04.2021	ISSUE FOR BID

DRAWN BY: JDV

PANDA PROJECT #: - S8-22-D8135  
C&P PROJECT #: - 2200775



06.04.2021

PANDA EXPRESS  
TRUE WARM AND WELCOME 2300  
SKYBROOKE BOULEVARD & STATE ROAD 54  
LUTZ, FL 33558

A-107

ROOF PLAN

TRUE WARM & WELCOME 2300 R4