

星座になれたら

Kessoku Band

Composed By: Hidemasa Naito

Arranged By: Ex.wife

$\text{♩} = 124$

4

6

8

10

12

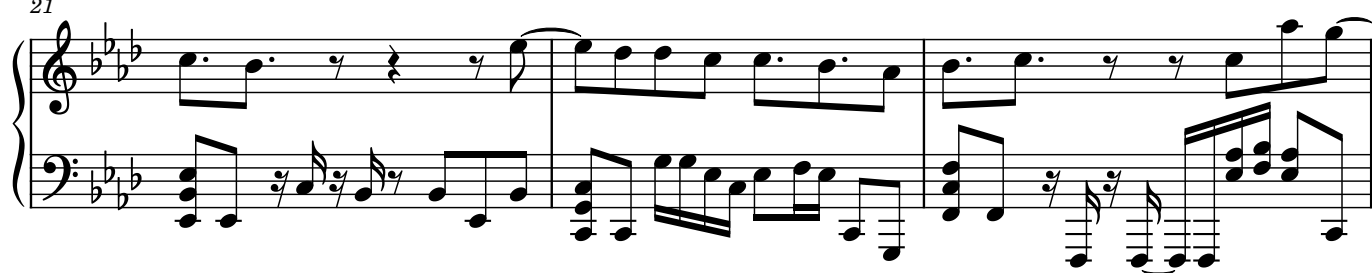
15



18



21



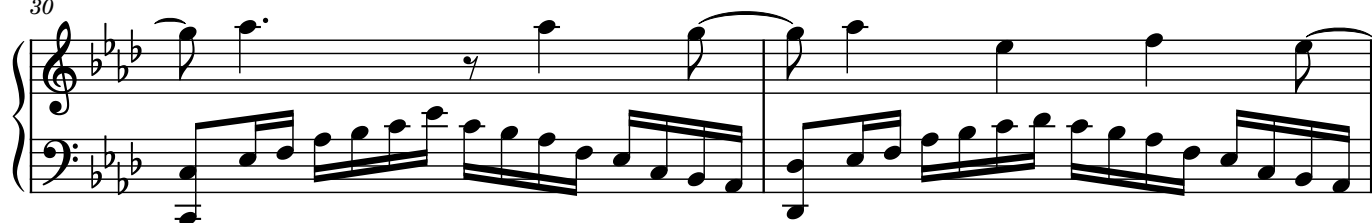
24



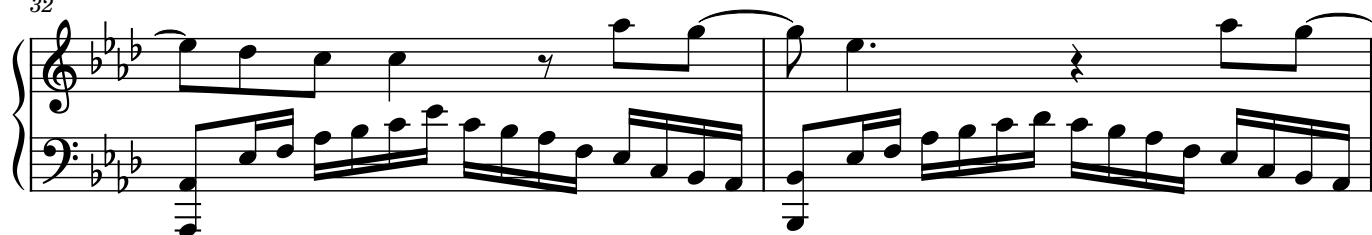
27



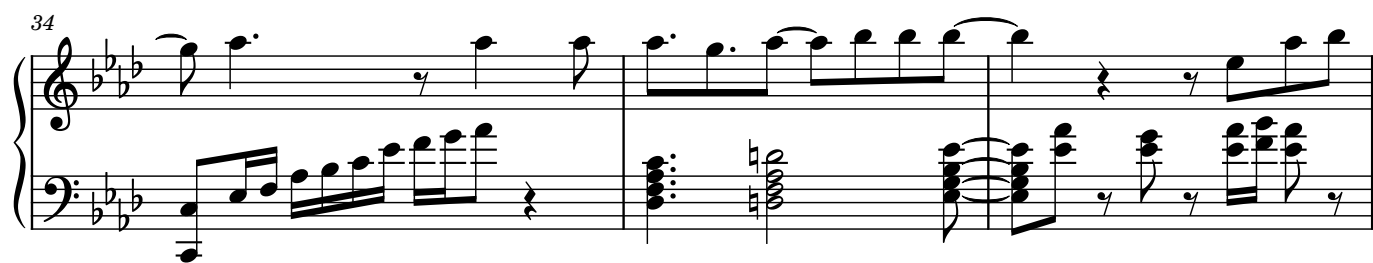
30



32

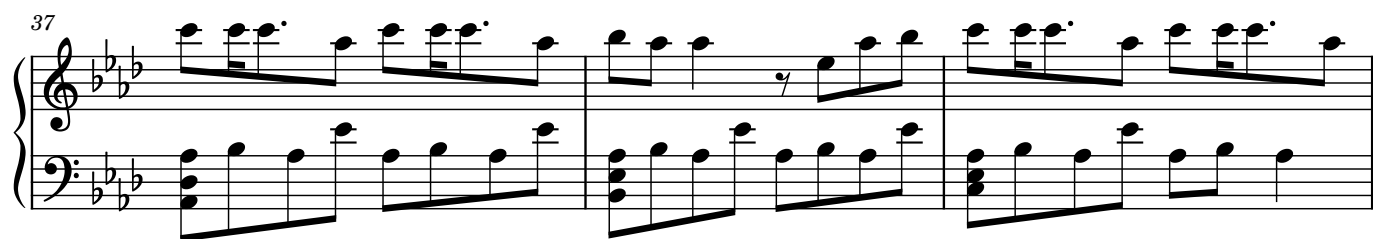


34



System 34: Treble and bass staves. Treble staff has a melodic line with eighth and quarter notes. Bass staff has a more complex accompaniment with sixteenth notes and chords.

37



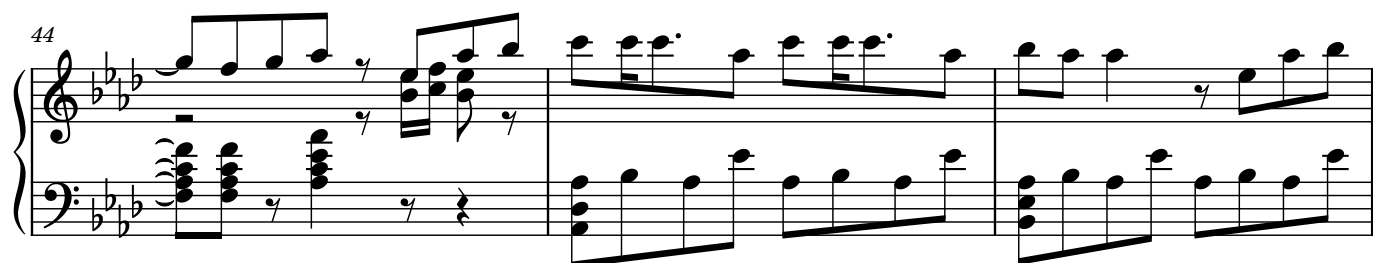
System 37: Treble and bass staves. Treble staff continues the melodic line. Bass staff features a steady eighth-note accompaniment.

40



System 40: Treble and bass staves. Treble staff has a melodic line with some rests. Bass staff has a complex accompaniment with chords and eighth notes.

44



System 44: Treble and bass staves. Treble staff has a melodic line with eighth notes. Bass staff has a complex accompaniment with chords and eighth notes.

47



System 47: Treble and bass staves. Treble staff has a melodic line with eighth notes. Bass staff has a complex accompaniment with chords and eighth notes.

50



System 50: Treble and bass staves. Treble staff has a melodic line with eighth notes. Bass staff has a complex accompaniment with chords and eighth notes.

53



System 53: Treble and bass staves. Treble staff has a melodic line with eighth notes. Bass staff has a complex accompaniment with chords and eighth notes.

55



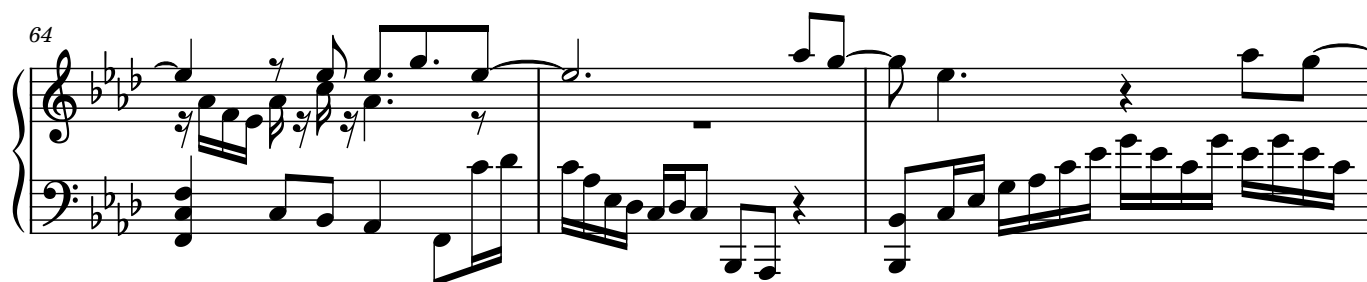
58



61



64



67



69



71



74

System 74-76: Treble and bass staves in E-flat major (three flats). The treble staff features a melodic line with eighth-note triplets and dotted rhythms. The bass staff provides a harmonic accompaniment with chords and eighth-note patterns.

77

System 77-80: Treble and bass staves. The treble staff continues the melodic development with various note values and rests. The bass staff features a more complex accompaniment with frequent chords and sixteenth-note patterns.

81

System 81-83: Treble and bass staves. The treble staff has a melodic line with some slurs. The bass staff features a prominent triplet of eighth notes in the first measure of the system.

84

System 84-86: Treble and bass staves. The treble staff continues the melodic line. The bass staff features a complex accompaniment with many chords and sixteenth-note patterns.

87

System 87-90: Treble and bass staves. The treble staff has a melodic line with some slurs. The bass staff features a complex accompaniment with many chords and sixteenth-note patterns.

91

System 91-94: Treble and bass staves. The treble staff has a melodic line with some slurs. The bass staff features a complex accompaniment with many chords and sixteenth-note patterns.

95

System 95-97: Treble and bass staves. The treble staff has a melodic line with some slurs. The bass staff features a complex accompaniment with many chords and sixteenth-note patterns. The system ends with a triplet of eighth notes in the treble staff.

97

Measures 97-98 of a piano piece in B-flat major. Measure 97 features a complex right-hand melody with four groups of triplets, each marked with a '3'. The left hand plays a steady eighth-note accompaniment. Measure 98 continues the right-hand melody with more triplets and a final half-note chord.

99

Measures 99-102. Measure 99 has a right-hand melody of eighth notes and a left-hand accompaniment of eighth notes. Measure 100 features a right-hand melody with a dotted quarter note and eighth notes, and a left-hand accompaniment of eighth notes. Measure 101 has a right-hand melody with a dotted quarter note and eighth notes, and a left-hand accompaniment of eighth notes. Measure 102 has a right-hand melody of eighth notes and a left-hand accompaniment of eighth notes.

103

Measures 103-106. Measure 103 has a right-hand melody of eighth notes and a left-hand accompaniment of eighth notes. Measure 104 has a right-hand melody of eighth notes and a left-hand accompaniment of eighth notes. Measure 105 has a right-hand melody of eighth notes and a left-hand accompaniment of eighth notes. Measure 106 has a right-hand melody of eighth notes and a left-hand accompaniment of eighth notes.

107

Measures 107-110. Measure 107 has a right-hand melody of eighth notes and a left-hand accompaniment of eighth notes. Measure 108 has a right-hand melody of eighth notes and a left-hand accompaniment of eighth notes. Measure 109 has a right-hand melody of eighth notes and a left-hand accompaniment of eighth notes. Measure 110 has a right-hand melody of eighth notes and a left-hand accompaniment of eighth notes.

111

Measures 111-114. Measure 111 has a right-hand melody of eighth notes and a left-hand accompaniment of eighth notes. Measure 112 has a right-hand melody of eighth notes and a left-hand accompaniment of eighth notes. Measure 113 has a right-hand melody of eighth notes and a left-hand accompaniment of eighth notes. Measure 114 has a right-hand melody of eighth notes and a left-hand accompaniment of eighth notes.

115

Measures 115-118. Measure 115 has a right-hand melody of eighth notes and a left-hand accompaniment of eighth notes. Measure 116 has a right-hand melody of eighth notes and a left-hand accompaniment of eighth notes. Measure 117 has a right-hand melody of eighth notes and a left-hand accompaniment of eighth notes. Measure 118 has a right-hand melody of eighth notes and a left-hand accompaniment of eighth notes.

119

System 119-122: Treble clef contains eighth-note runs and quarter notes. Bass clef contains a steady eighth-note accompaniment. Measure 122 features a whole rest in the bass.

123

System 123-126: Treble clef continues with eighth-note runs. Bass clef features a more complex accompaniment with chords and eighth notes. Measure 126 ends with a whole rest in the bass.

127

System 127-130: Treble clef continues with eighth-note runs. Bass clef features a more complex accompaniment with chords and eighth notes. Measure 130 ends with a whole rest in the bass.

130

System 130-133: Treble clef continues with eighth-note runs. Bass clef features a more complex accompaniment with chords and eighth notes. Measure 133 ends with a whole rest in the bass.

133

System 133-136: Treble clef continues with eighth-note runs. Bass clef features a more complex accompaniment with chords and eighth notes. Measure 136 ends with a whole rest in the bass.

135

System 135-138: Treble clef continues with eighth-note runs. Bass clef features a more complex accompaniment with chords and eighth notes. Measure 138 ends with a whole rest in the bass.

137

System 137-140: Treble clef continues with eighth-note runs. Bass clef features a more complex accompaniment with chords and eighth notes. Measure 140 ends with a whole rest in the bass.