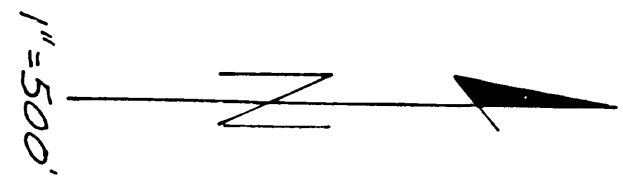


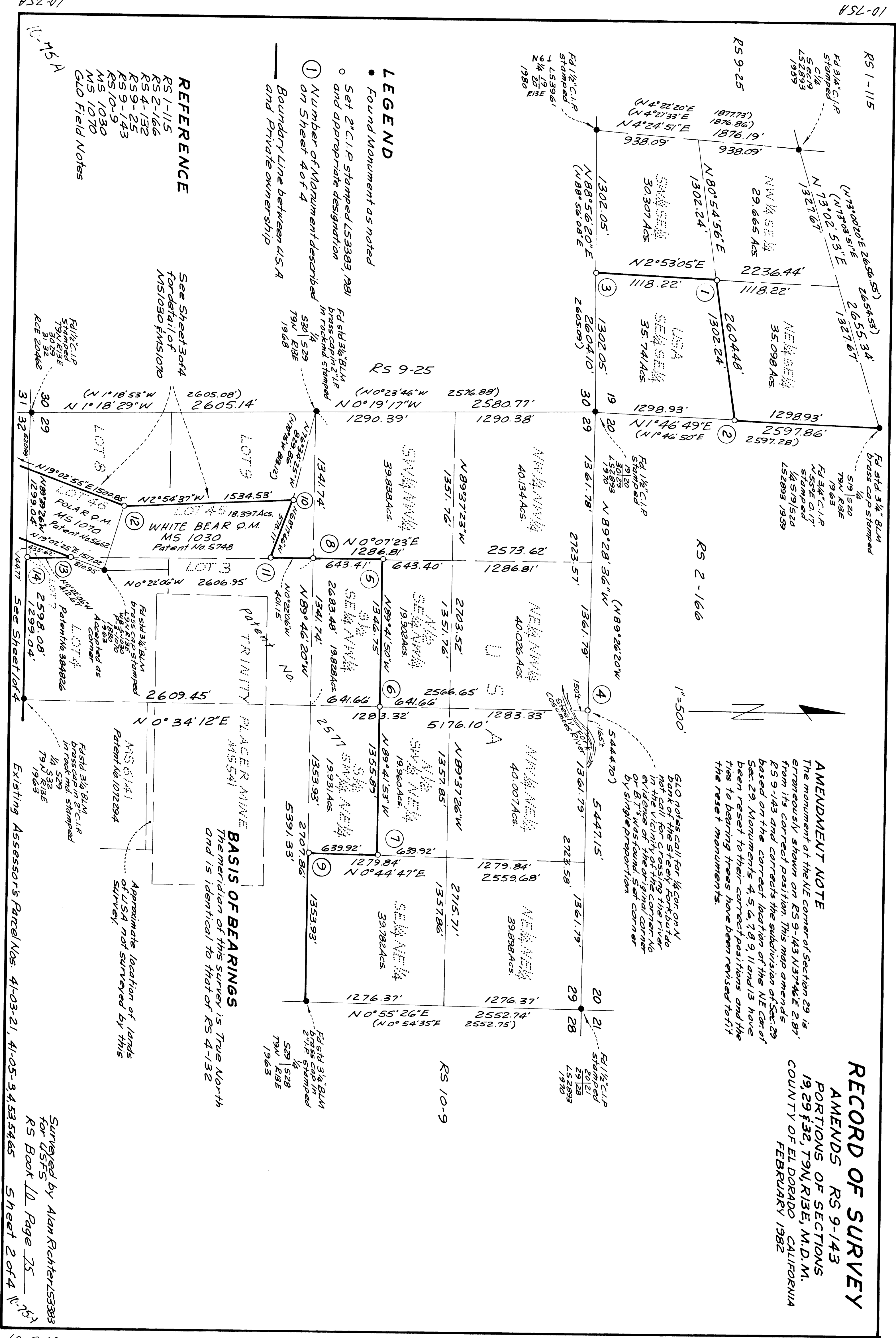
RECORD OF SURVEY
AMENDS RS 9-143
PORTIONS OF SECTIONS
19, 29 & 32, T9N, R13E, M.D.M.
COUNTY OF EL DORADO, CALIFORNIA
FEBRUARY 1982

AMENDMENT NOTE
The monument at the NE corner of Section 29 is erroneously shown on RS 9-143 N37°46'E 2.87' from its correct position. This map amends RS 9-143 and corrects the subdivision of Sec. 29 based on the correct location of the NE corner of Sec. 29. Monuments 4, 5, 6, 7, 8, 9, 11 and 13 have been reset to their correct positions and the ties to bearing trees have been revised to fit the reset monuments.

GLO notes call for 1/4 cor on N bank of the steel fork but do not call for crossing the river in the vicinity of the corner. No evidence of the original corner or B.M. was found. Set corner by single proportion.



1"=500'



LEGEND

- Found Monument as noted
- Set 2" C.I.P. stamped LS3383, 1981 and appropriate designation
- ① Number of Monument described on Sheet 4 of 4
- Boundary Line between U.S.A. and Private ownership

REFERENCE

- RS 1-115
- RS 2-166
- RS 4-132
- RS 9-25
- RS 9-143
- RS 10-9
- MS 1030
- MS 1070
- GLO Field Notes

See Sheet 3 of 4 for detail of MS 1030 & MS 1070

BASIS OF BEARINGS

The meridian of this survey is True North and is identical to that of RS 4-132

Approximate location of lands of U.S.A. not surveyed by this survey.

Surveyed by Alan Richter LS3383 for USFS
RS Book 10 Page 25
Sheet 2 of 4