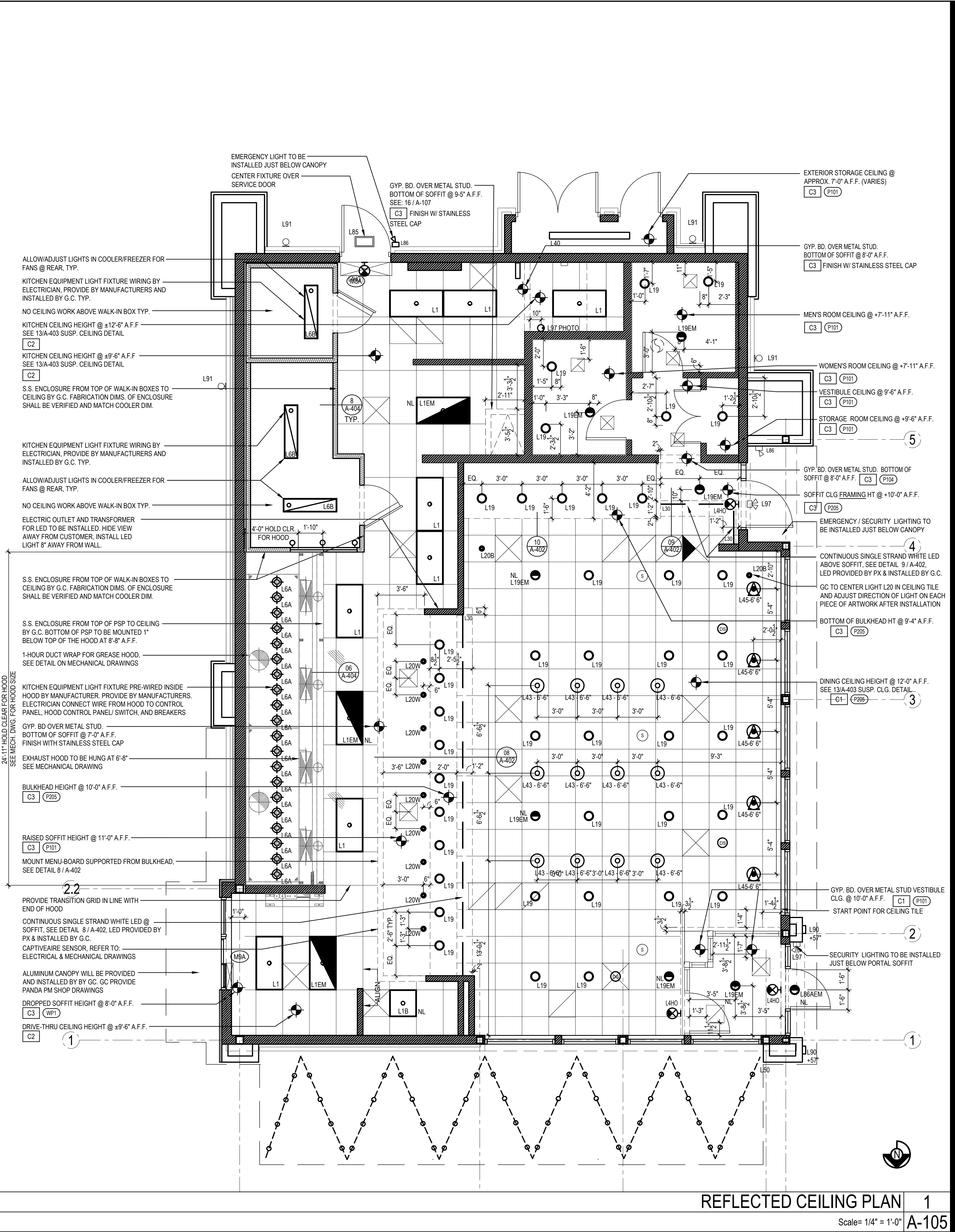


LIGHTING FIXTURE SCHEDULE			PROVIDED FOR INFORMATION ONLY. VERIFY AND INSTALL PER ELECTRICAL DRAWING			11-07-21
ITEM	SYMBOL	DESCRIPTION	QTY.	MFR. & CAT. NO.	REMARK	WATTS
INTERIOR LIGHTING ITEM						
L1		T-BAR CEILING RECESSED MOUNTED LED LIGHTING FIXTURE, 2' X 4', 120V WITH 5400 LUMEN PACKAGE, 4000K, AND BAKED-ON WHITE ENAMEL FINISH.	8	DAY-BRITE FIXTURE: 2TG54L-840-4-FS-02F-UNV-DIM	KITCHEN CEILING LIGHTS, FURNISHED BY OWNER INSTALLED BY GC	49.3
L1B		T-BAR CEILING RECESSED MOUNTED LED LIGHTING FIXTURE, 2' X 2', 120V WITH 3000 LUMEN PACKAGE, 4000K, AND BAKED-ON WHITE ENAMEL FINISH.	1	DAY-BRITE FIXTURE: 2TG30L-840-2-FS-02F-UNV-DIM	KITCHEN CEILING LIGHTS, FURNISHED BY OWNER INSTALLED BY GC	32.7
L1EM		T-BAR CEILING RECESSED MOUNTED LED LIGHTING FIXTURE, SAME AS TYPE L1 EXCEPT WITH INTEGRAL BATTERY PACK.	3	DAY-BRITE FIXTURE: 2TG54L-840-4-FS-02F-UNV-DIM-EMLED	EMERGENCY KITCHEN CEILING LIGHTS FURNISHED BY OWNER INSTALLED BY GC	49.3
L1BEM		T-BAR CEILING RECESSED MOUNTED LED LIGHTING FIXTURE, SAME AS TYPE L1B EXCEPT WITH INTEGRAL BATTERY PACK.	0	DAY-BRITE FIXTURE: 2TG30L-840-2-FS-02F-UNV-DIM-EMLED	EMERGENCY KITCHEN CEILING LIGHTS FURNISHED BY OWNER INSTALLED BY GC	32.7
L4H0		UNIVERSAL MOUNT LED EXIT SIGN, 120/277V WITH BATTERY PACK, 2 FACE WITH GREEN LETTERS	4	EXITRONIX GVE-X-U-BP-WB-BL-R6	EXIT SIGN FURNISHED BY OWNER, INSTALLED BY GC. EXIT SIGNS TO BE WALL MOUNTED UNLESS NOTED OTHERWISE.	3.6
L6A		HOOD LIGHT	20	FURNISHED & INSTALLED BY EQUIPMENT SUPPLIER	LIGHTS SUPPLIED & PRE-WIRED BY HOOD VENDOR. ELEC. CONTRACTOR TO CONNECT MAIN WIRES TO SHUNT TRIP BREAKER AND HOOD CONTROL PANEL	BUILT INTO HOOD
L6B		LED WALK-IN COOLER LIGHT, 120V, 48"	3	KASON FIXTURE: # 1810LX4000	FURNISHED BY WIC VENDOR, G.R.E., INSTALLED BY GC	39
L19		LED DOWN LIGHT, RECESSED IN CEILING	41	ELITE HOUSING: LD6IC-AT LED MODULE: ELITE LED LIGHTING RL607-750L-DIMTR-120-30K-SN-SN-90+	FURNISHED BY OWNER, INSTALLED BY GC	9
L19EM		LED EMERGENCY DOWN LIGHT, RECESSED IN CEILING	7	ELITE HOUSING: LD6IC-AT LED MODULE: ELITE LED LIGHTING RL607-750L-DIMTR-120-30K-SN-SN-90+	EMERGENCY RECESSED DOWN LIGHT - NORMALLY ON INVERTER UNIT - ISOLITE, IMI-12-LC-V1 FURNISHED BY OWNER INSTALLED BY GC	9
L20		3 3/4" ADJUSTABLE MR16 DOWN LIGHT, RECESSED IN CEILING. "W" SHALL DESIGNATE WHITE TRIM USED FOR MENU BD. SOFFIT	9	LIGHTOLIER: LYTECASTER - 378WHX FRAME-IN KIT: 302MRSPX LAMP: MR16 - GE - LED 6W, 35° BEAM	FURNISHED BY OWNER, INSTALLED BY GC	6
L20B		3 3/4" ADJUSTABLE MR16 DOWN LIGHT, RECESSED IN CEILING. "B" SHALL DESIGNATE BLACK TRIM USED FOR DINING ROOM CEILING GRID	2	LIGHTOLIER: LYTECASTER - 378WHX FRAME-IN KIT: 302MRSPX LAMP: MR16 - GE - LED 6W, 35° BEAM	FURNISHED BY OWNER, INSTALLED BY GC	6
L30		WHITE LED AT SERVICE COUNTER SOFFIT AND DINING ROOM PARTIAL HEIGHT WALL	36 L.F.	LUXEM BRIGHT FIXTURE: BLAZE LED	FURNISHED BY OWNER, INSTALLED BY GC	1.3 WATTS PER FOOT
L43		12" DIA. DECORATIVE BAYLOR PENDANT LF INCANDESCENT	12	LBL LIGHTING, MODEL # P1461ORB BULB: LED EDISON LAMP: 1173467	FURNISHED BY OWNER, INSTALLED BY GC	9
L45		12" DIA. DECORATIVE MORILL PENDANT LF INCANDESCENT	5	LBL LIGHTING, MODEL # 6227801-839 BULB: LED EDISON LAMP: 1173467	FURNISHED BY OWNER, INSTALLED BY GC STANDARD CORD LENGTH IS 3'-6". COORDINATE CORD LENGTH REQUIRED AND ORDER WITH LONGER CORD IF REQUIRED	9
L100		MICRO INVERTER	1	ISOLITE #IMI 125	FURNISHED BY OWNER, INSTALLED BY GC	
		SPEAKER			FURNISHED BY MUSIC VENDOR, INSTALLED BY MUSIC VENDOR	
NIGHT LIGHTING REQUIREMENTS: "NL" DESIGNATION INDICATES NIGHT LIGHT ON UNSWITCHED CIRCUIT.						
1. ONE NL BY SERVICE COUNTER, POS / CASHIER						
2. ONE NL BY POS / CASHIER AT DRIVE THRU STATION IF APPLICABLE						
3. ONE NL BY EACH EXIT DOOR IN DINNING ROOM & BACK OF HOUSE						
EXTERIOR LIGHTING						
L40		LINEAR LED LIGHT IN EXTERIOR STORAGE ROOM	1	COOPER LIGHTING, MX-4VT2-LD4-6-DR-UNV-L840-CD1-WL-U	4' LED VAPORTITE FIXTURE, SURFACE MOUNTED, FURNISHED BY OWNER, INSTALLED BY GC	56
L50		STRING LIGHTING	96 L.F.	LIGHTCRAFT - BISTRO COLLECTION E26 ARCHITECTURAL SUSPENDED STRING BK-E26-S - LINEAR LED-BK-S14-1-120-FIL - (1W EA)	FURNISHED BY OWNER, INSTALLED BY GC (VERIFY W/ PANDA). STRING LIGHTS WALL BASE POINT (REFER TO ARCH. ELEVATIONS). STRING LIGHTS CENTER LOW POINT (S' A F.F. LOWER THAN WALL BASE POINT), CONFIRM EXACT LENGTH IN FIELD.	44 (1 W PER LAMP)
L85		WALL MOUNTED OVER SERVICE DOOR	1	HOWARD LIGHTING PRODUCTS LED WALL PACK #VL305 30W LED, 120V WITH BRONZE FINISH	OVER EXTERIOR SERVICE DOOR. REFER TO ARCHITECTURAL ELEVATIONS FOR HEIGHT. FURNISHED BY OWNER, INSTALLED BY GC.	29
L86		EXTERIOR EMERGENCY LIGHT	2	EXITRONIX, MLED1-G-WP	OVER EXTERIOR ENTRANCE & SERVICE DOORS. REFER TO ARCHITECTURAL ELEVATIONS FOR HEIGHT. FURNISHED BY OWNER, INSTALLED BY GC	1.5
L86AEM		EXTERIOR RECESSED EMERGENCY LIGHT	1	ELITE HOUSING: LD6IC-AT LED MODULE: ELITE LED LIGHTING WET LOCATION: RL607-14W-120-FL-30K-SN-SN-WET LOCATION	EMERGENCY RECESSED DOWN LIGHT - NORMALLY ON INVERTER UNIT - ISOLITE, IMI-12-LC-V1 FURNISHED BY OWNER INSTALLED BY GC	9
CEILING SCHEDULE						
INSTALLED AND FURNISHED BY G.C. UNLESS NOTED OTHERWISE						
NO	MANUFACTURER	DESCRIPTION	MATERIAL	FINISH		
C1	ARMSTRONG	2' X 2' SUSPENDED T-BAR GRID CEILING SYSTEM	CUSTOM #PN91311	T-BAR AND GRID COLOR: SEPIA CONTACT AT ARMSTRONG-SHERRY BRUNT 1-800-442-4212		
C2	USG	2' X 4' SUSPENDED T-BAR GRID CEILING SYSTEM	"VINYL ROCK" VINYL CLAD GYP. BD PANELS	SMOOTH AND WASHABLE WHITE		
C3	GOLD BOND	MONOLITHIC CEILING ON METAL FRAMING	5/8" GYP. BD.	SMOOTH PAINT - WHITE AND WASHABLE		
C4	USG	2' X 2' SUSPENDED T-BAR GRID CEILING SYSTEM	"VINYL ROCK" VINYL CLAD GYP. BD PANELS	PAINT GRID AND TILES AS SHOWN ON DETAILS		
G.C. TO APPLY CONTINUOUS CLEAR SILICONE SEALANT AT PERIMETER GRID / FRP JOINT. TYPICAL THROUGHOUT B.O.H. CEILING			NOTE: PROVIDE 4 VERTICAL WIRES (ATTACHED TO MAIN RUNNERS) WITHIN 3" OF EACH CORNER OF EACH FIXTURE. #8 GA. MIN HANGER WIRE @ OPP. CORNER FOR FIXT. WEIGHING LESS THAN 56 LBS. LATERAL BRACING SEE DETAIL 13 / A-403 LIGHT FIXTURE SEE "E" DWGS FOR SPECS. PROVIDE SCREWS OR CLIPS & FASTEN FIXT. TO T-BAR HANGER WIRE SEE 13/A-403			
CEILING GRID DETAIL			3	LIGHT FIXTURE DETAIL		
Scale= NTS			A-105	Scale= NTS		



PANDA EXPRESS, INC.  
1683 Walnut Grove Ave.  
Rosemead, California  
91770  
Telephone: 626.799.9898  
Facsimile: 626.372.8288

All ideas, designs, arrangement and plans indicated or represented by this drawing are the property of Panda Express Inc. and were created for use on this specific project. None of these ideas, designs, arrangements or plans may be used by or disclosed to any person, firm, or corporation without the written permission of Panda Express Inc.

#### REVISIONS:

NO.	DESCRIPTION	DATE

#### ISSUE DATE:

STATE PERMIT	DATE

DRAWN BY: CSW

PANDA PROJECT #: D8060  
ARCH PROJECT #: JCDT20-0240



**NORR**  
ARCHITECTS PLANNERS

PANDA EXPRESS  
TRUE WARM & WELCOME  
390 W Spring Mill Pointe Dr.  
Westfield, IN 46074

**A-105**

REFLECTED CEILING PLAN

Scale= 1/4" = 1'-0"

TRUE WARM & WELCOME 2300 R5